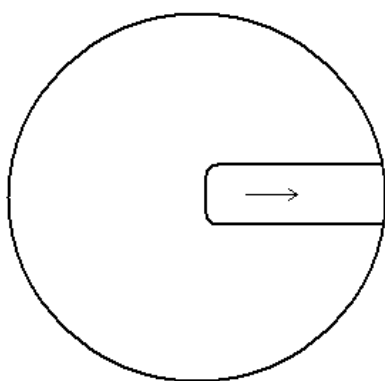


**Inwentaryzacja studni rewizyjnych na kanale sanitarnym**  
**Stare Berezowo**  
(od strony drogi Bielsk Podl. – Hajnówka)

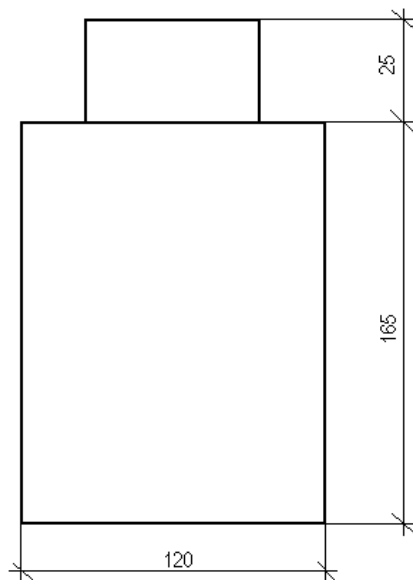
Arkusz Nr 1

**Studzienka nr 1**

Uwagi:  
- brak przyłączy

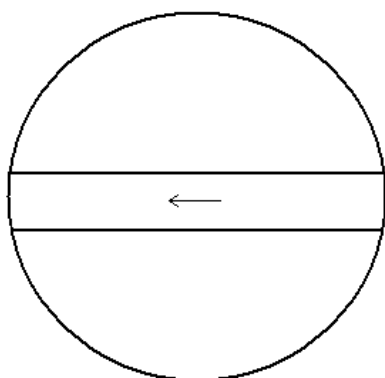


Ulica

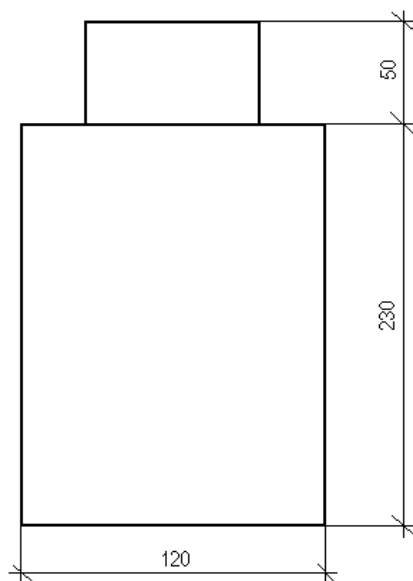


**Studzienka nr 2**

Uwagi:  
- brak przyłączy



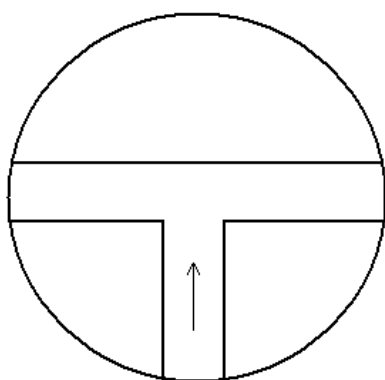
Ulica



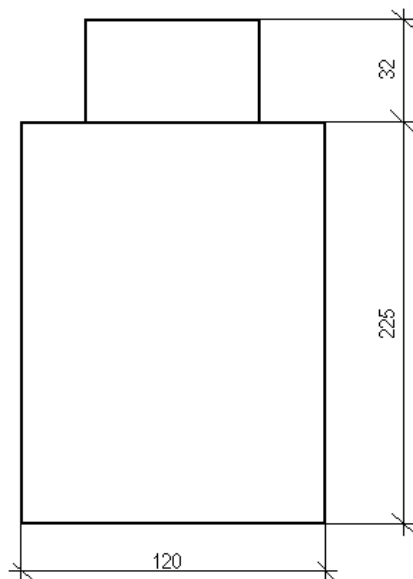
**Studzienka nr 3**

Uwagi:

- przyłącze w kinecie



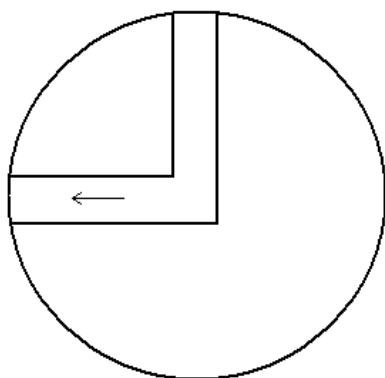
Ulica



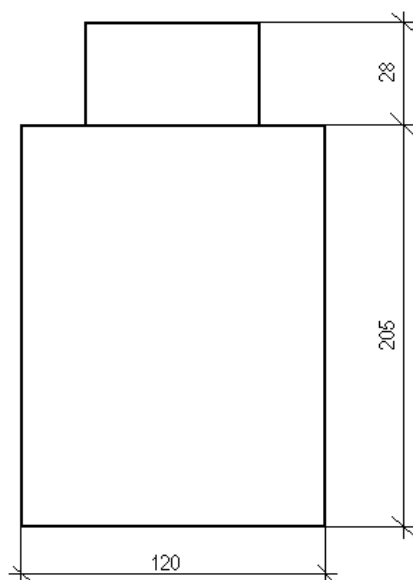
**Studzienka nr 4**

Uwagi:

- przyłącze w kinecie



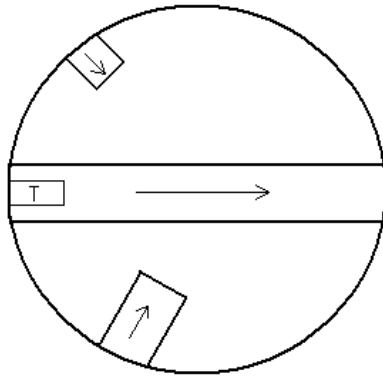
Ulica



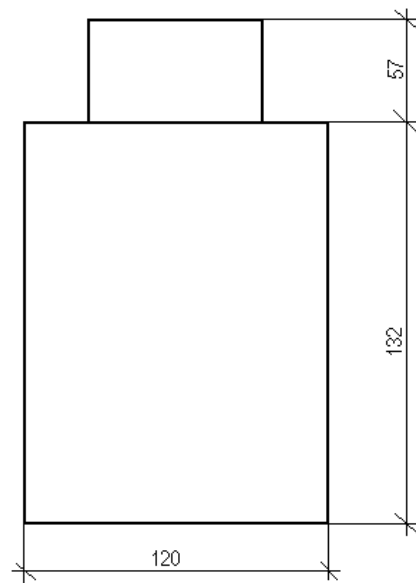
### Studzienka nr 5

Uwagi:

- T- tłoczny  $\varnothing 90$



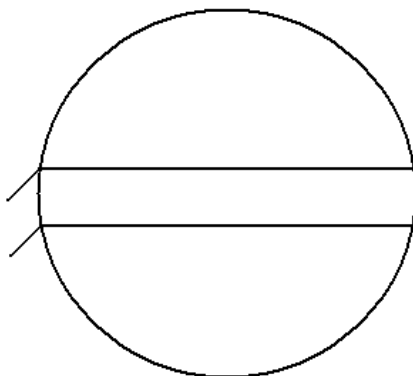
Ulica



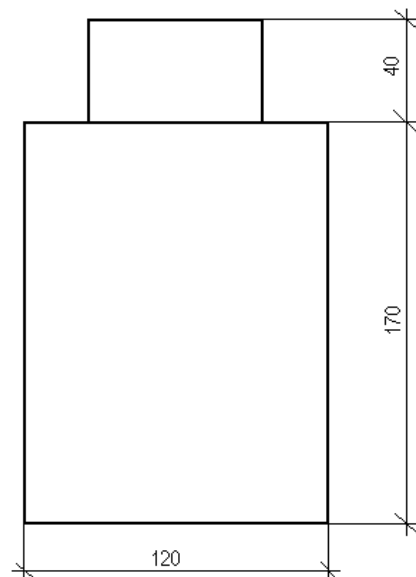
### Studzienka nr 6

Uwagi:

- brak przyłączy



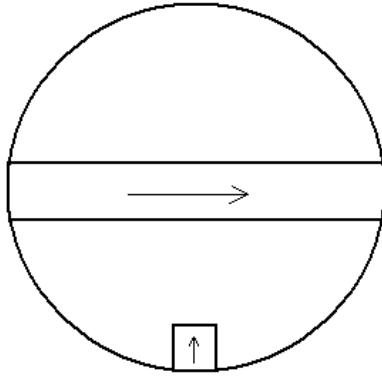
Ulica



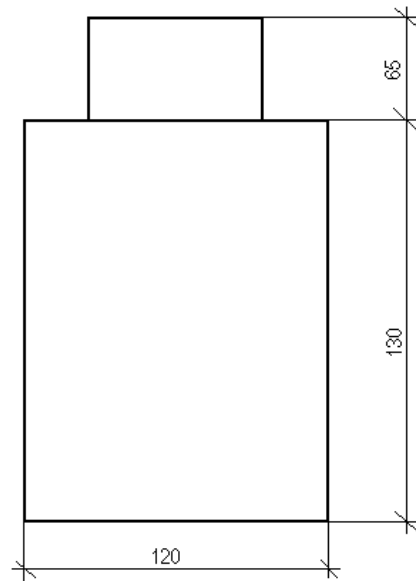
**Studzienka nr 7**

Uwagi:

- płynie woda z przyłącza



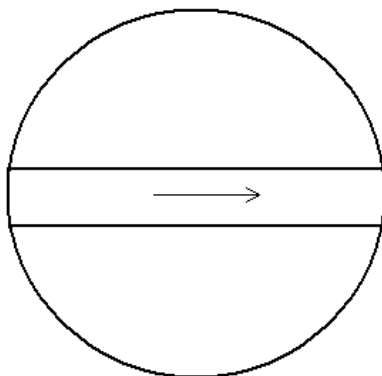
Ulica



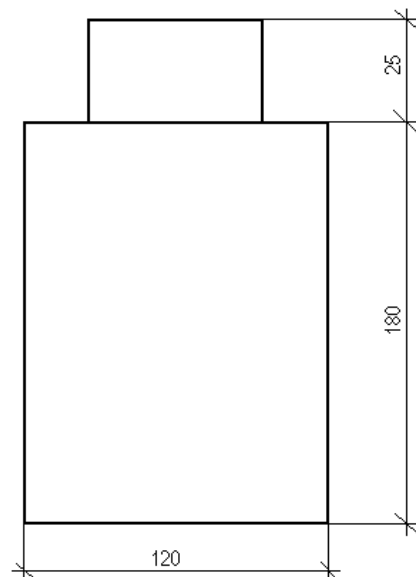
**Studzienka nr 8**

Uwagi:

- brak przyłączy



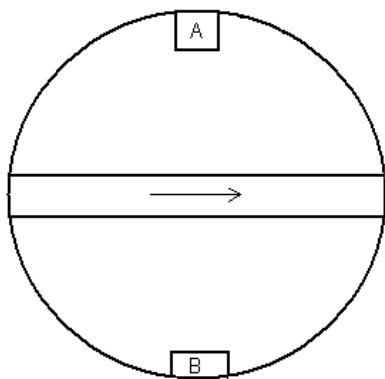
Ulica



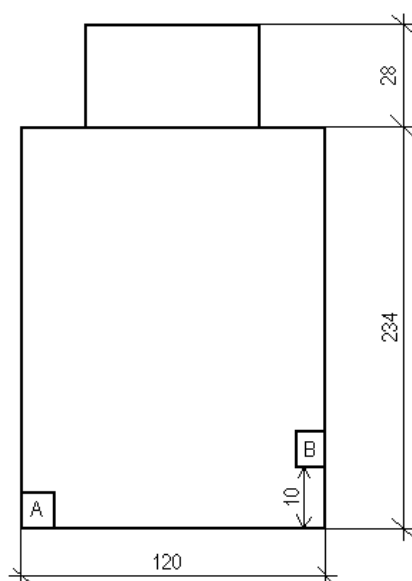
### Studzienka nr 9

Uwagi:

- dno i dolny krąg mokry
- cieknie z przyłącza B
- przyłącze A przy dnie

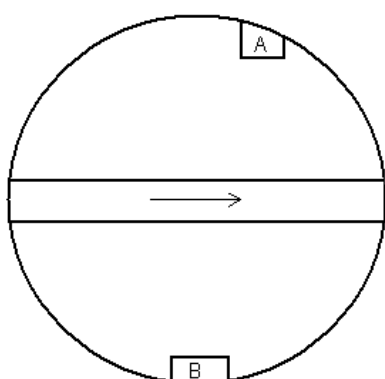


Ulica

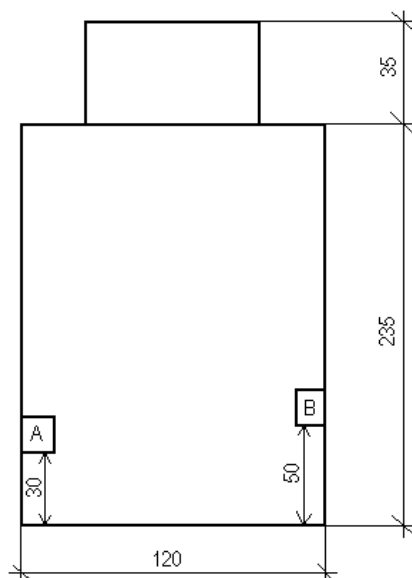


### Studzienka nr 10

Uwagi:

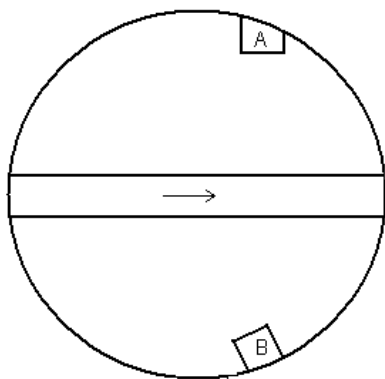


Ulica

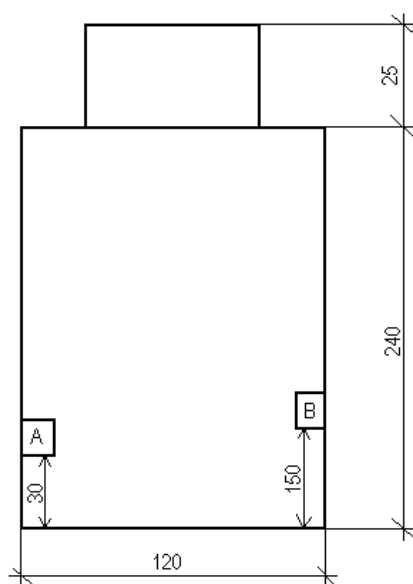


### Studzienka nr 11

Uwagi:



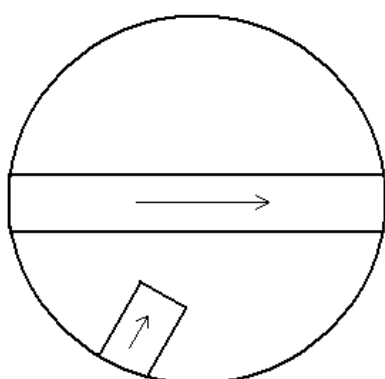
Ulica



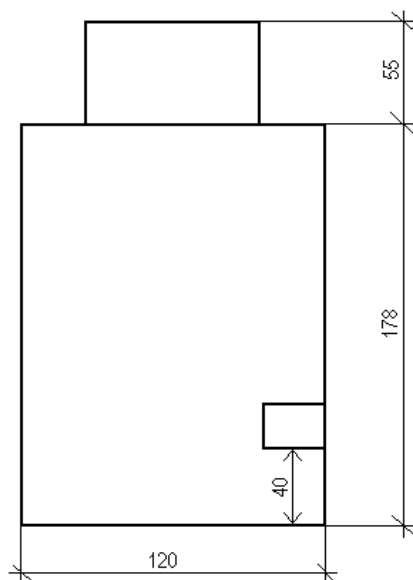
### Studzienka nr 12

Uwagi:

- cieknie z przyłącza

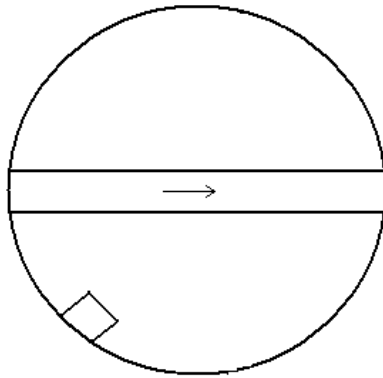


Ulica

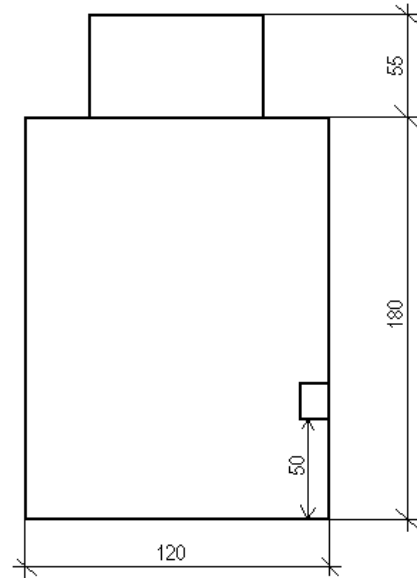


**Studzienka nr 13**

Uwagi:

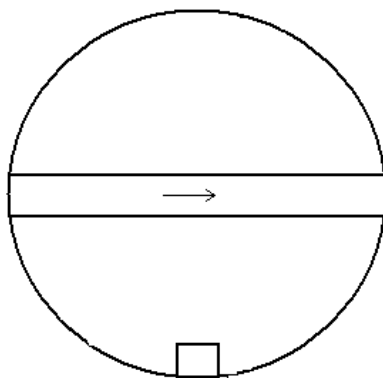


Ulica

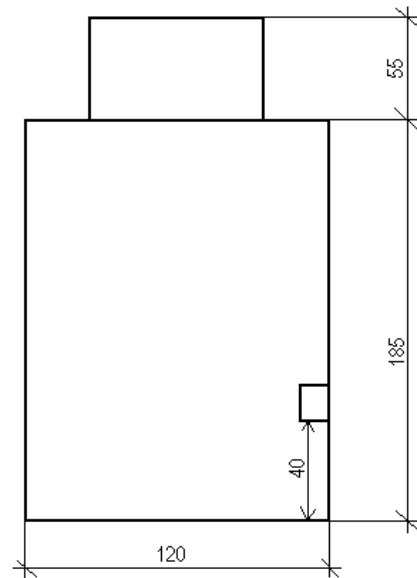


**Studzienka nr 14**

Uwagi:

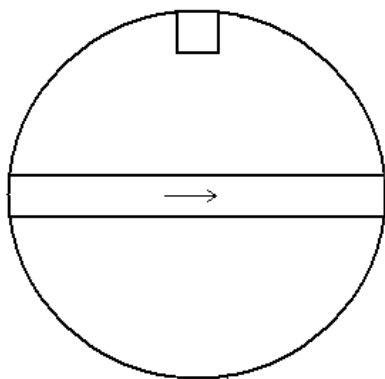


Ulica

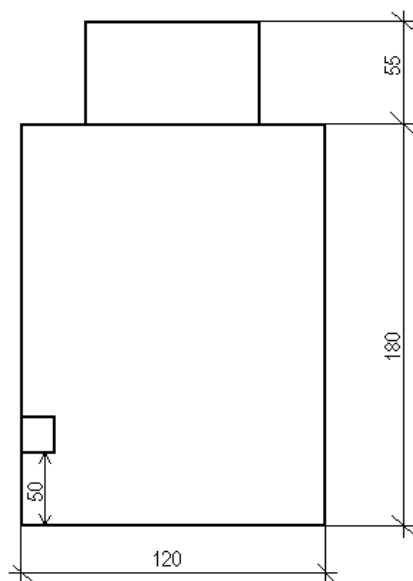


**Studzienka nr 15**

Uwagi:

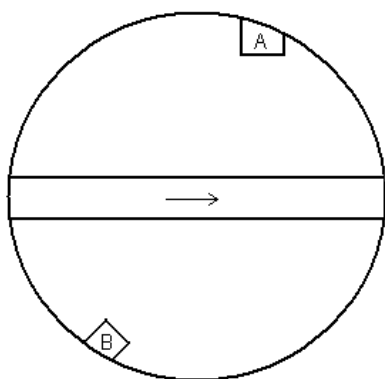


Ulica

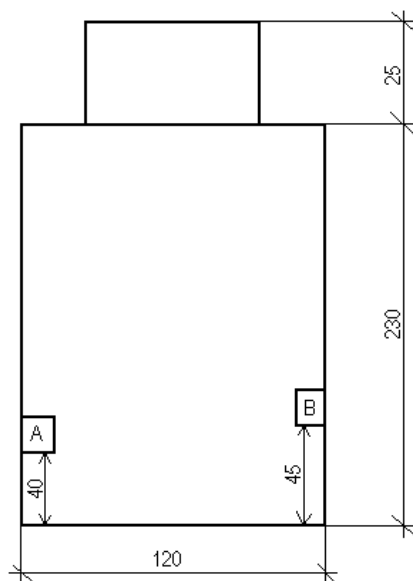


**Studzienka nr 16**

Uwagi:



Ulica

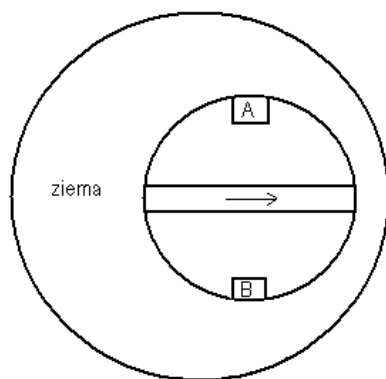




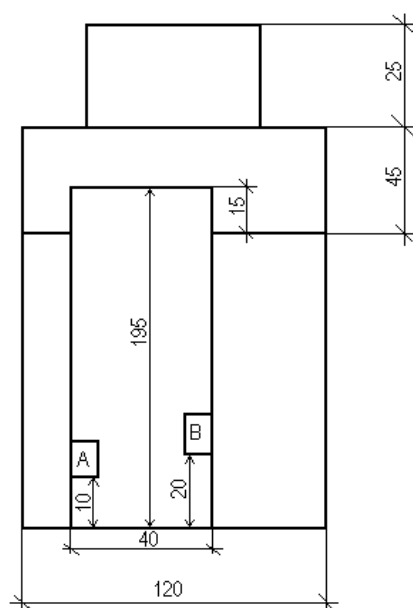
### Studzienka nr 19

Uwagi:

- studzienka z rurą PCV



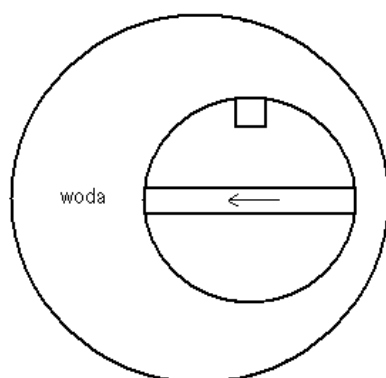
Ulica



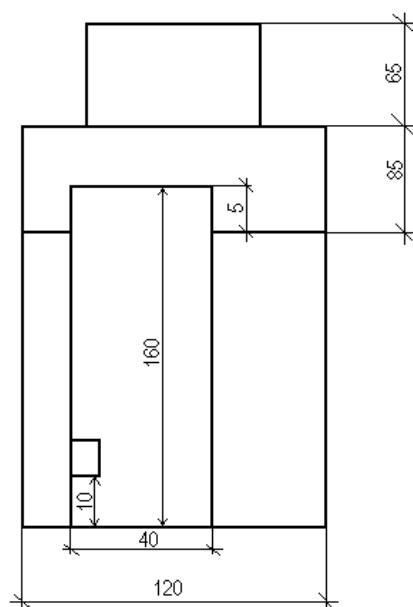
### Studzienka nr 20

Uwagi:

- studzienka z rurą PCV



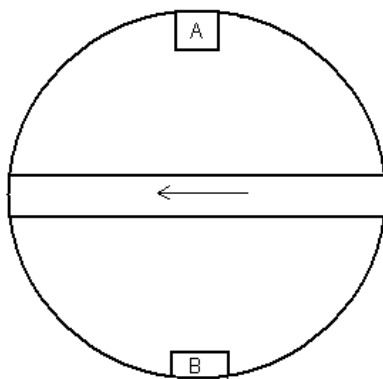
Ulica



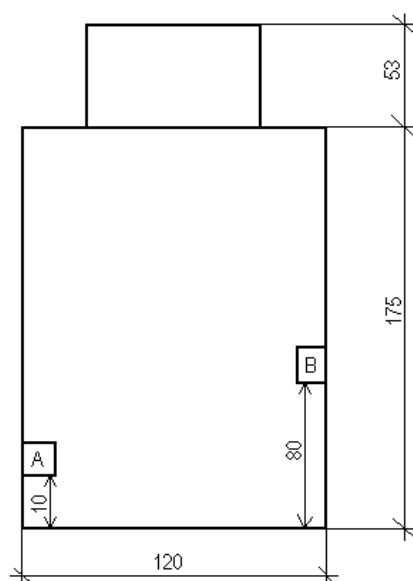
### Studzienka nr 21

Uwagi:

- kapie z przyłączy B

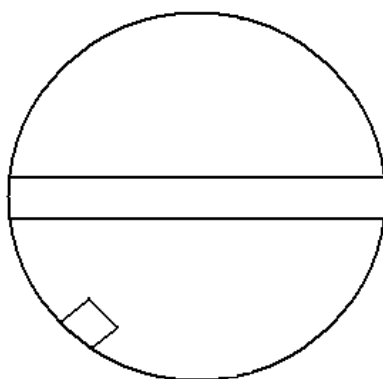


Ulica

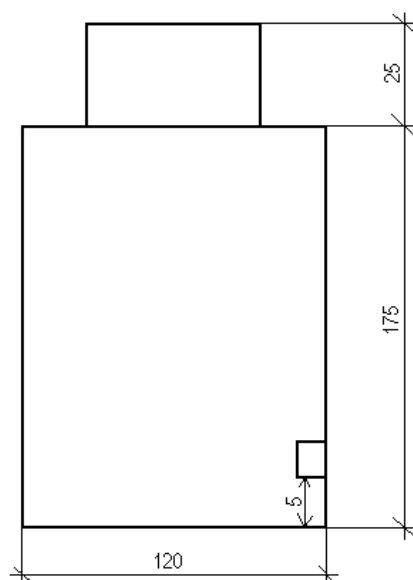


### Studzienka nr 22

Uwagi:

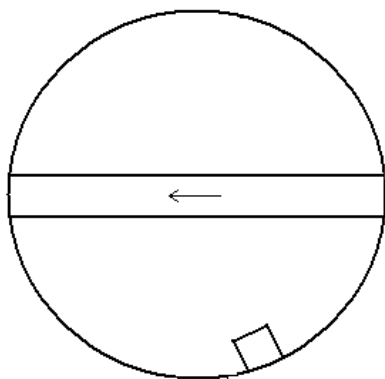


Ulica

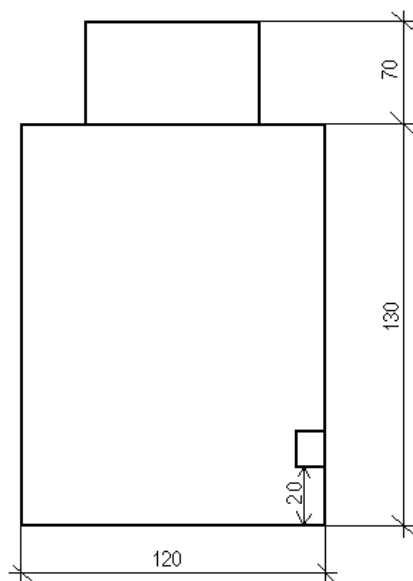


### Studzienka nr 23

Uwagi:



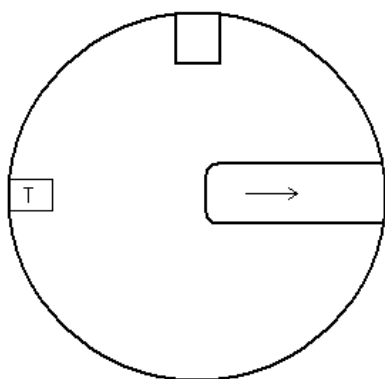
Ulica



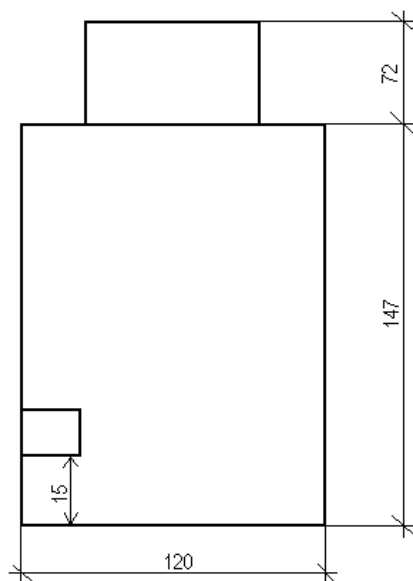
### Studzienka nr 24

Uwagi:

- mocno cieknie z przyłącza
- T- tłoczny  $\varnothing 90$



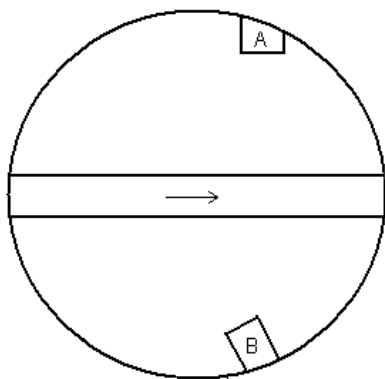
Ulica



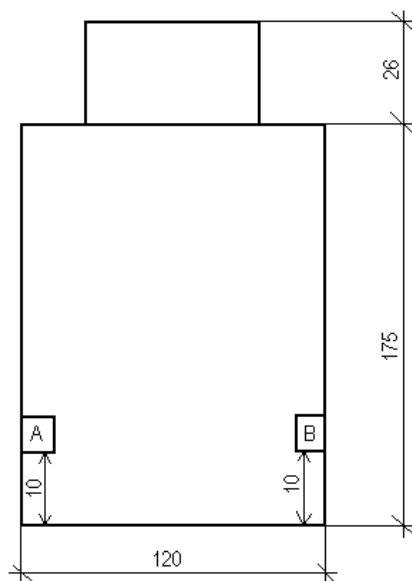
### Studzienka nr 25

Uwagi:

- cieknie z obu przyłączy



Ulica

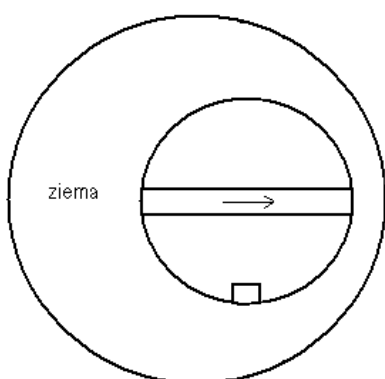


Arkusz Nr 3

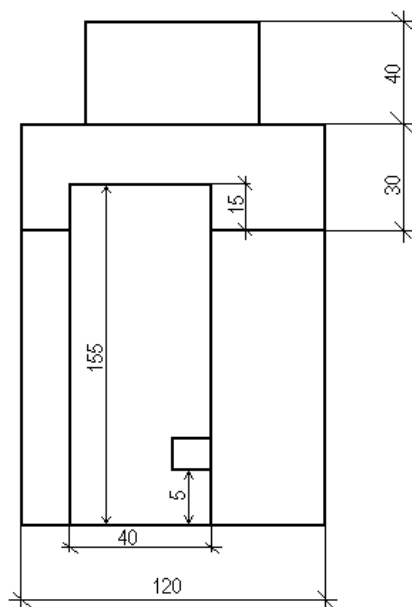
### Studzienka nr 26

Uwagi:

- studzienka z rurą PCV



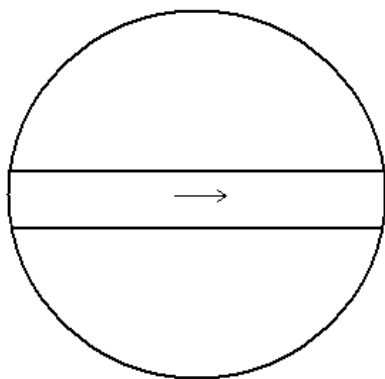
Ulica



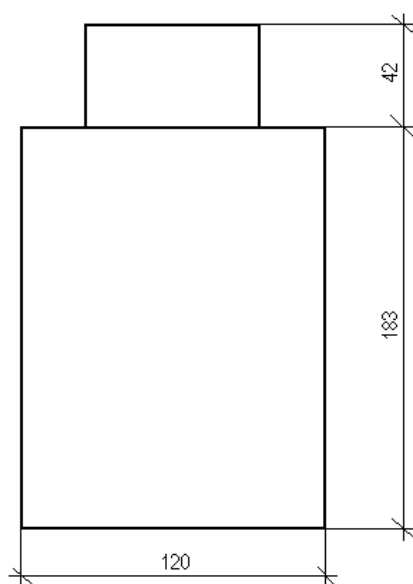
**Studzienka nr 27**

Uwagi:

- brak przyłączy

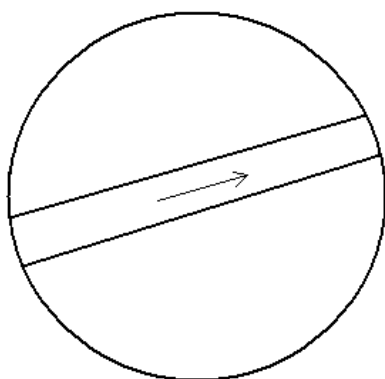


Ulica

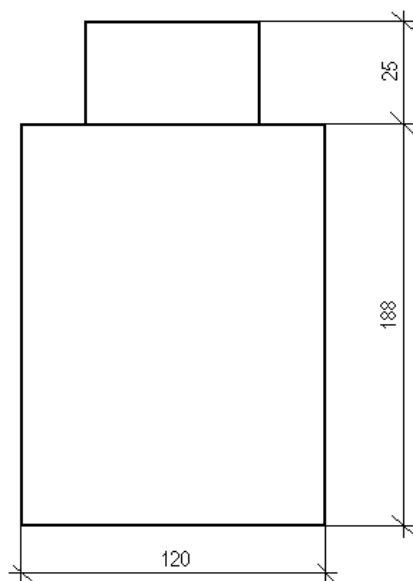
**Studzienka nr 28**

Uwagi:

- brak przyłączy  
- przecieka studzienka

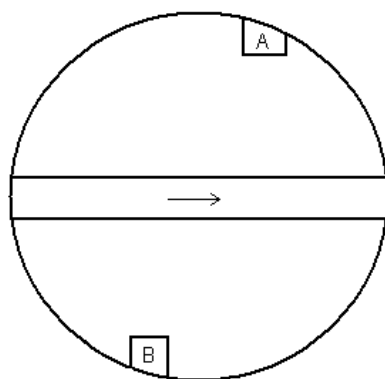


Ulica

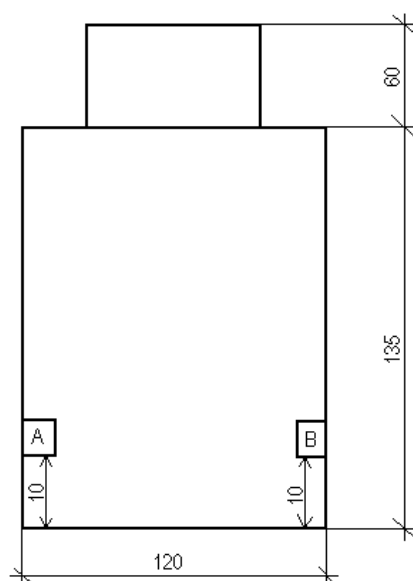


**Studzienka nr 30**

Uwagi:



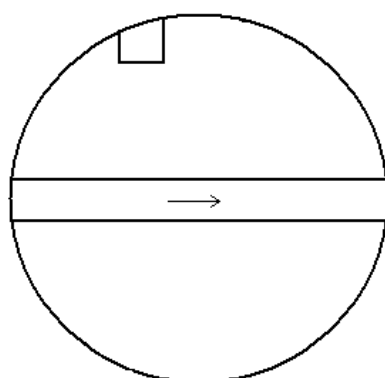
Ulica



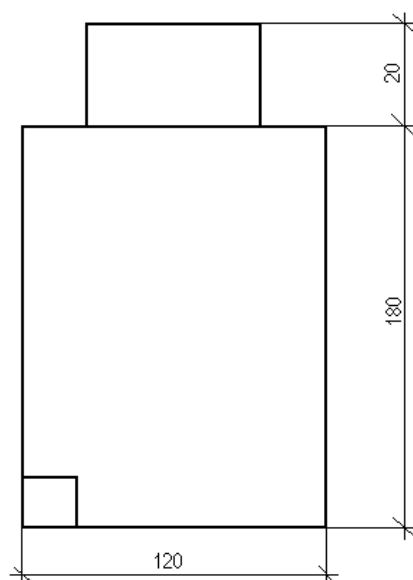
**Studzienka nr 31**

Uwagi:

- przyłącze przy dnie

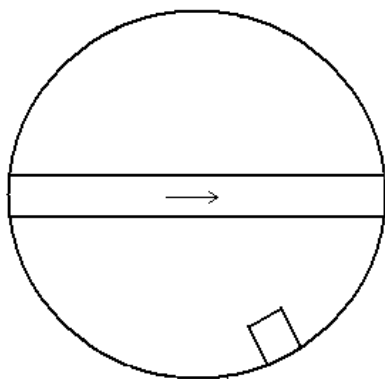


Ulica

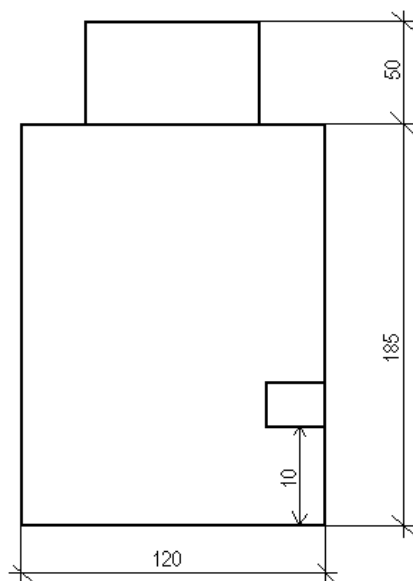


**Studzienka nr 32**

Uwagi:



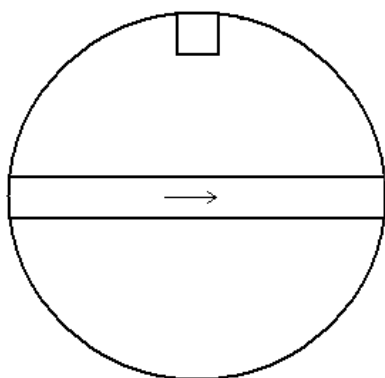
Ulica



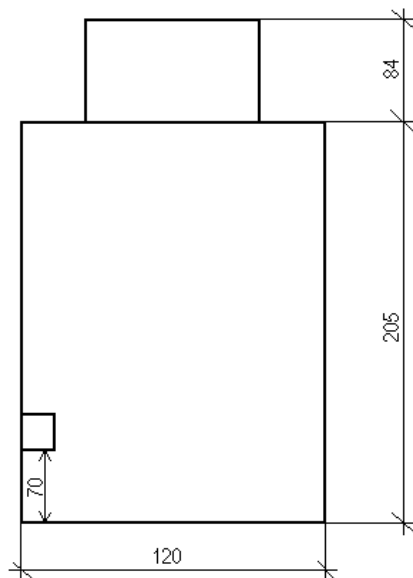
**Studzienka nr 33**

Uwagi:

- cieknie z przyłącza



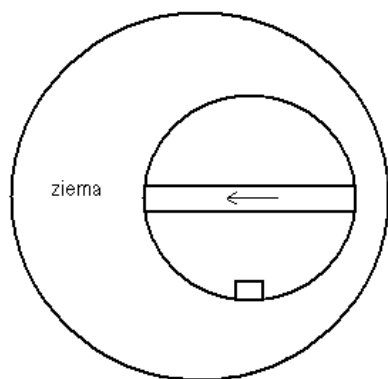
Ulica



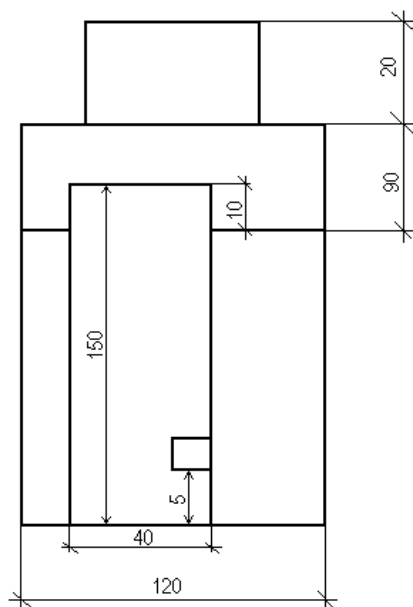
### Studzienka nr 35

Uwagi:

- studzienka z rurą PCV

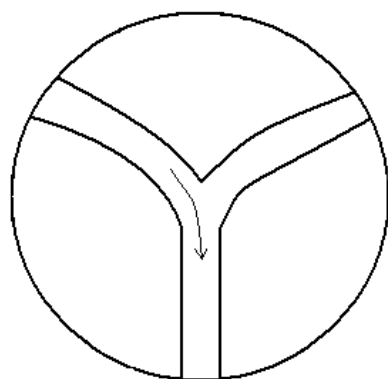


Ulica

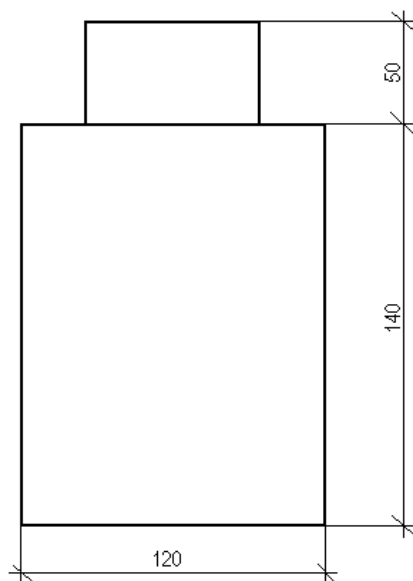


### Studzienka nr 36

Uwagi:



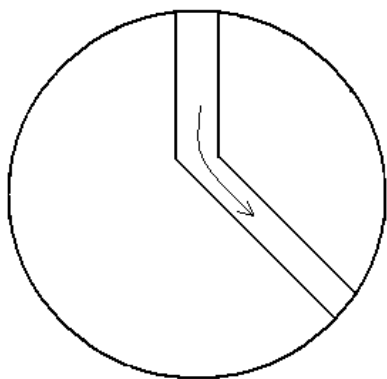
Ulica



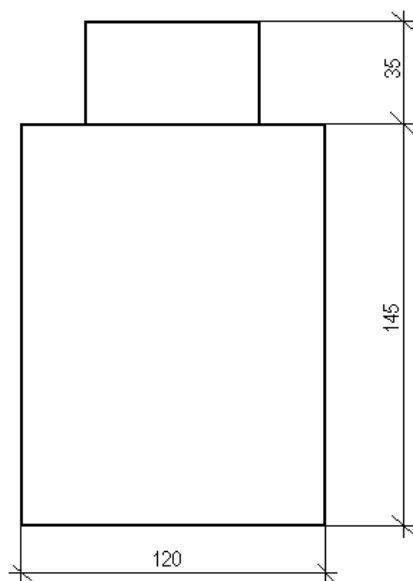


**Studzienka nr 37**

Uwagi:

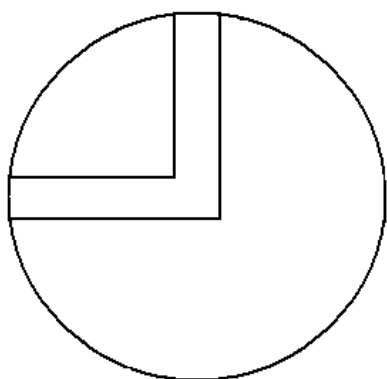


Ulica

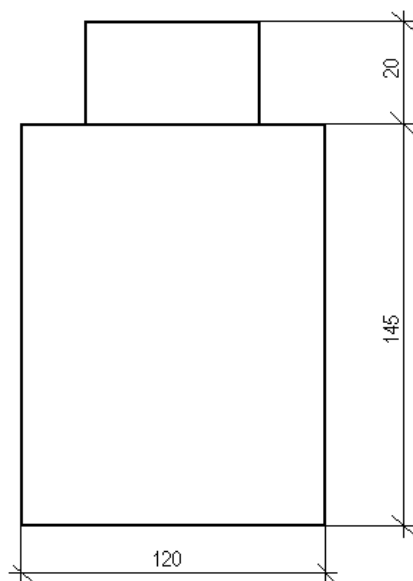


**Studzienka nr 38**

Uwagi:



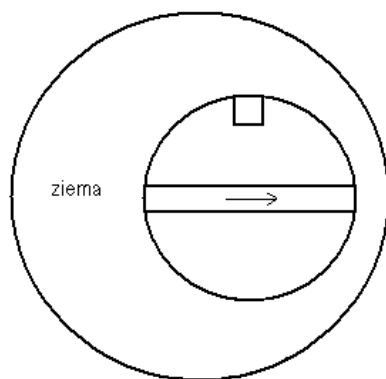
Ulica



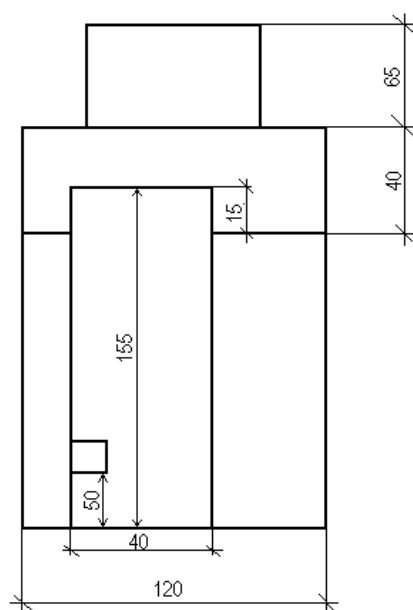
### Studzienka nr 39

Uwagi:

- studzienka z rurą PCV

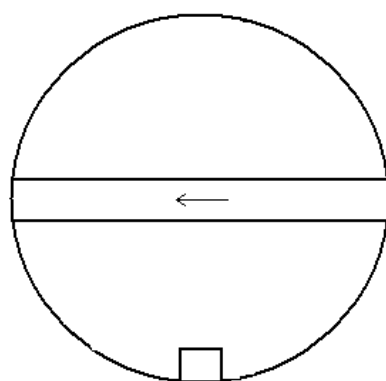


Ulica

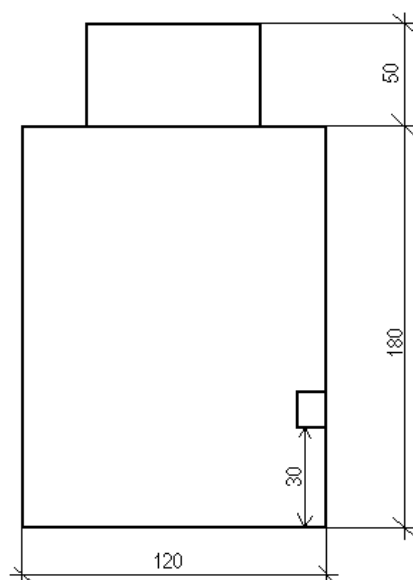


### Studzienka nr 40

Uwagi:



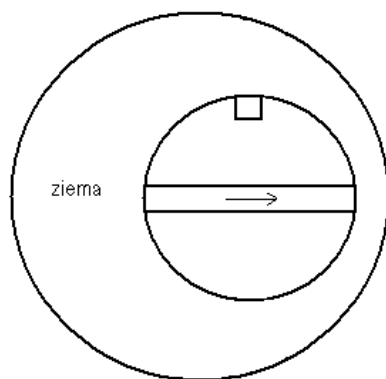
Ulica



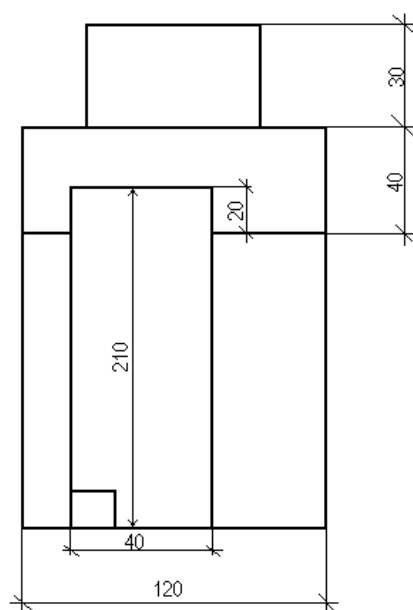
### Studzienka nr 41

Uwagi:

- studzienka z rurą PCV
- przyłącze przy dnie



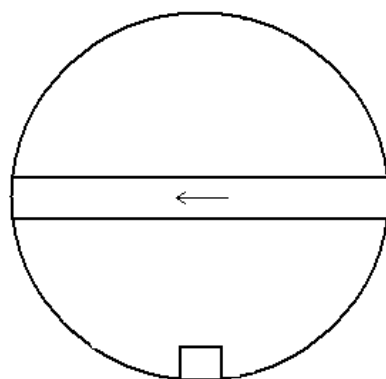
Ulica



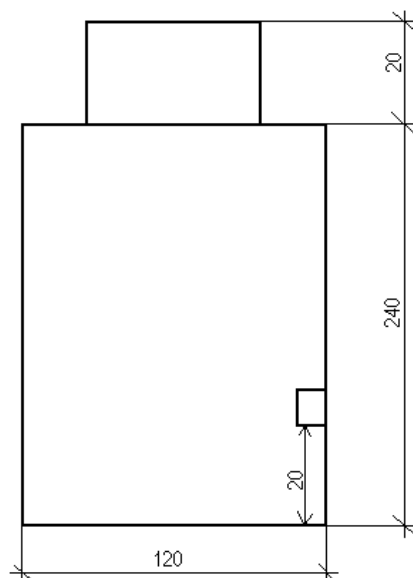
### Studzienka nr 42

Uwagi:

- lekko płynie woda

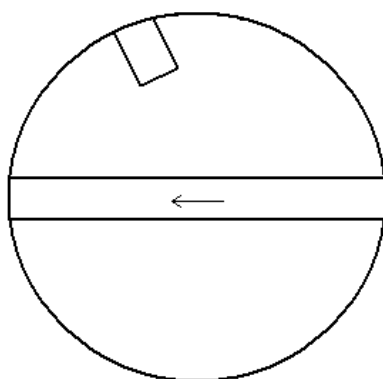


Ulica

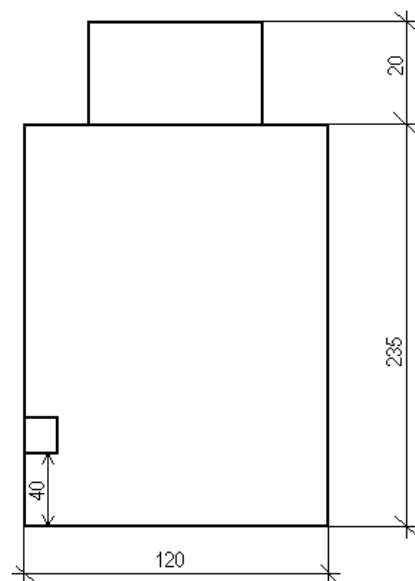


**Studzienka nr 43**

Uwagi:

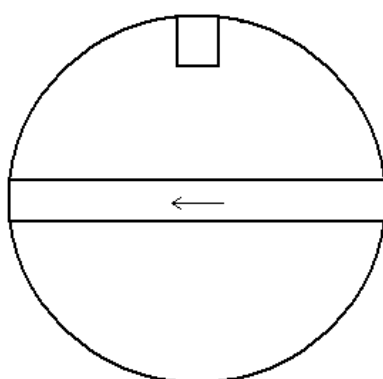


Ulica

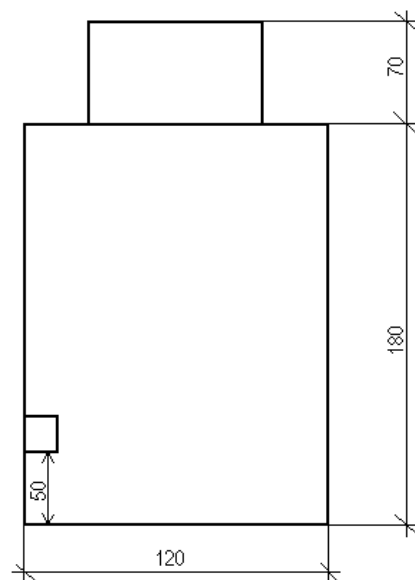


**Studzienka nr 44**

Uwagi:



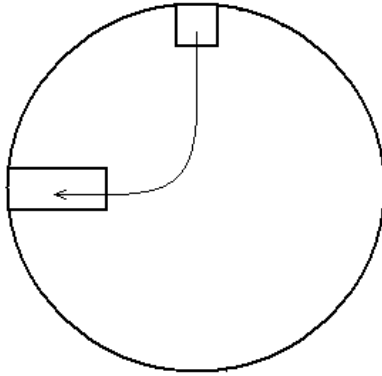
Ulica



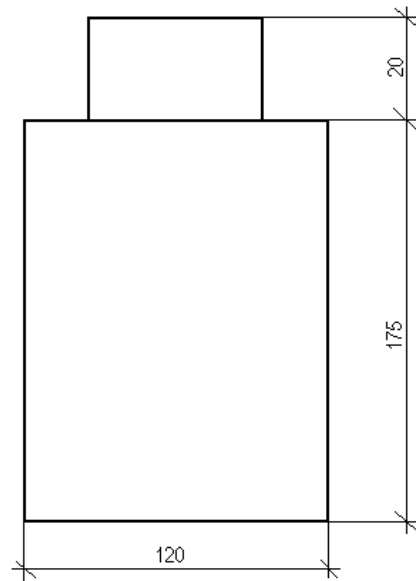
#### Studzienka nr 45

Uwagi:

- brak połączenia pomiędzy przyłączami



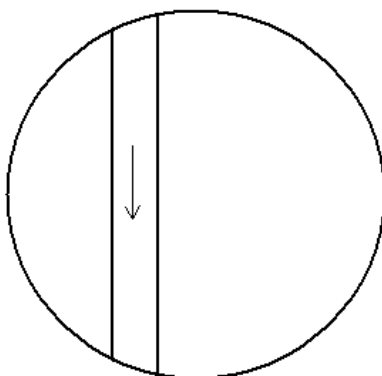
Ulica



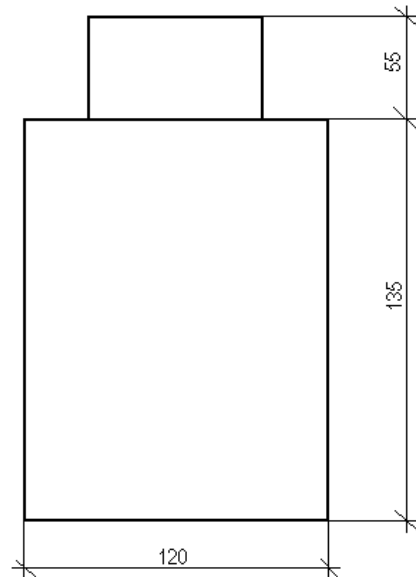
#### Studzienka nr 48

Uwagi:

- w pasie kolejowym
- brak przyłączy
- mocno płynie

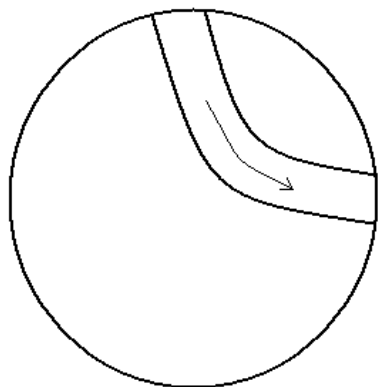


Ulica

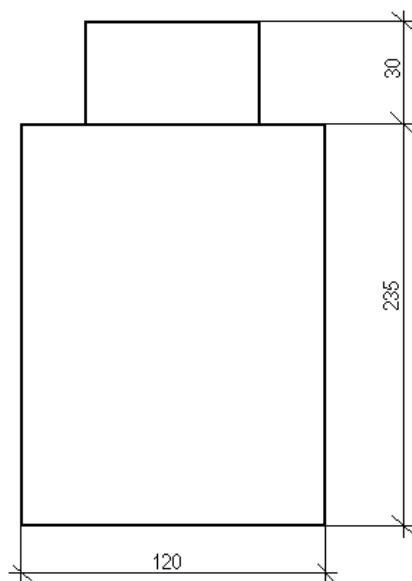


**Studzienka nr 49**Uwagi:

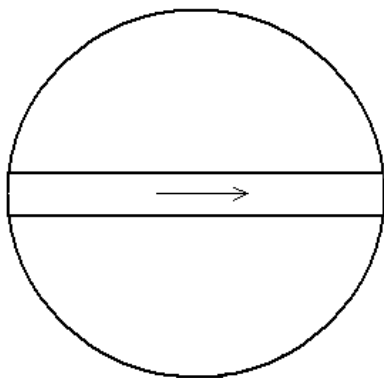
- brak przyłączy
- mocno płynie woda



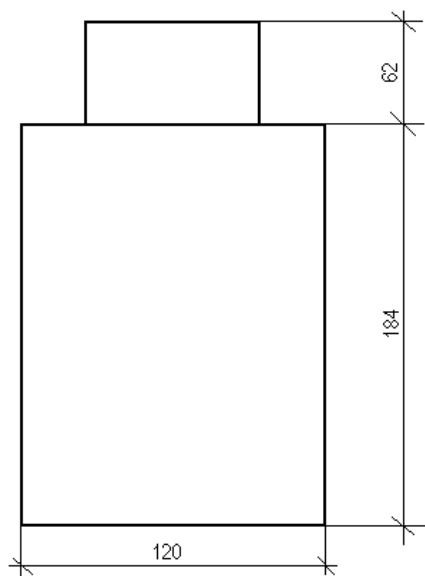
Ulica

**Studzienka nr 50**Uwagi:

- ciągle płynie woda
- brak przyłączy
- połamany pierścień

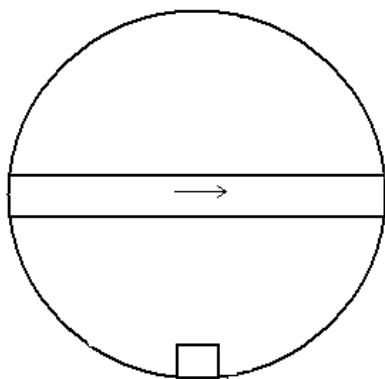


Ulica

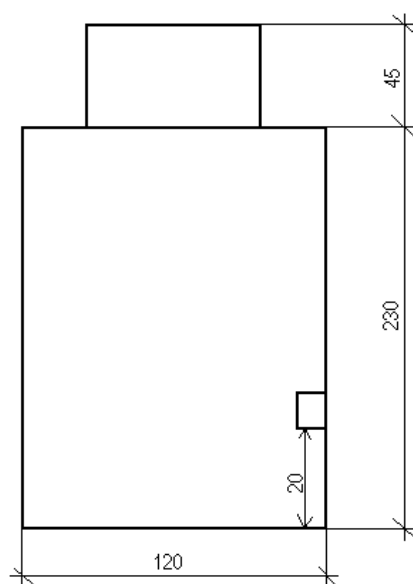


**Studzienka nr 51**

Uwagi:



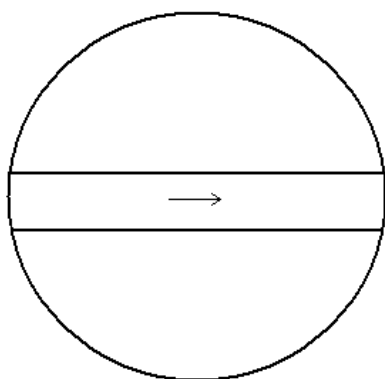
Ulica



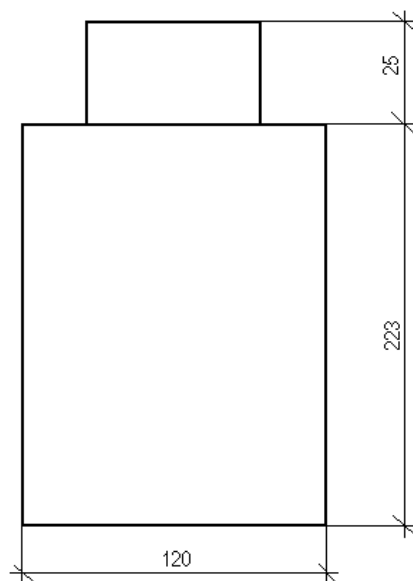
**Studzienka nr 52**

Uwagi:

- brak przyłączy

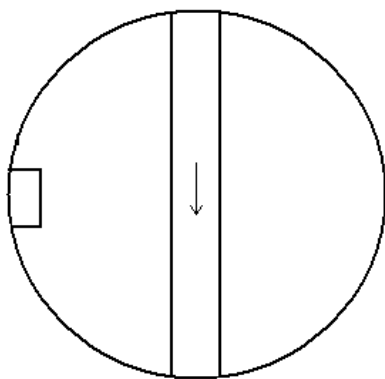


Ulica

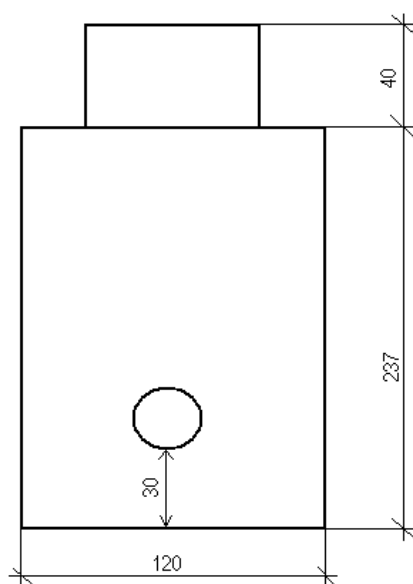


**Studzienka nr 53**Uwagi:

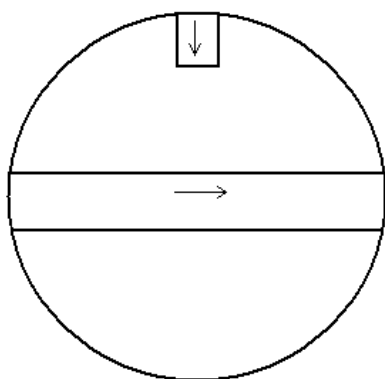
- kapie z przyłącza



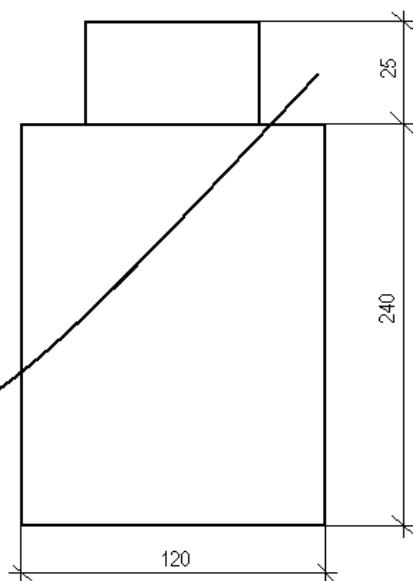
Ulica

**Studzienka nr 54**Uwagi:

- przyłączy w kinecie



Ulica

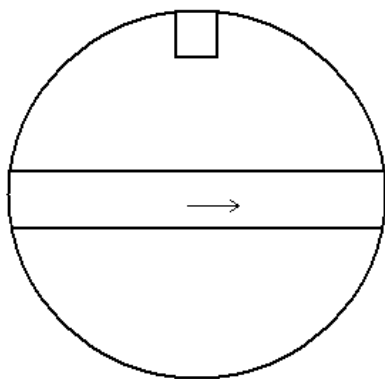




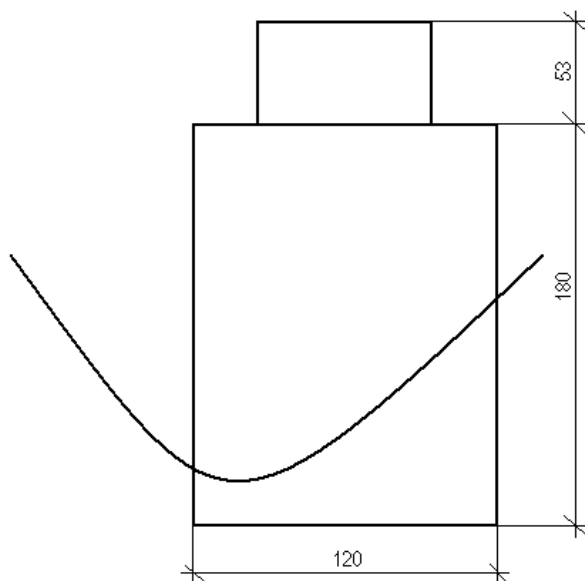
**Studzienka nr 55**

Uwagi:

- przyłącze w kinecie



Ulica

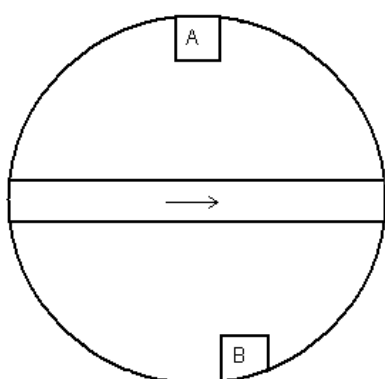


Arkusz Nr 5

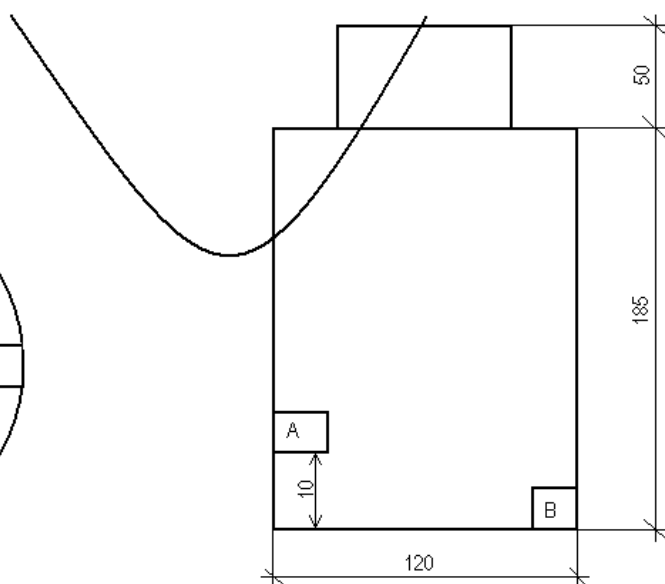
**Studzienka nr 56**

Uwagi:

- przyłącze B przy dnie



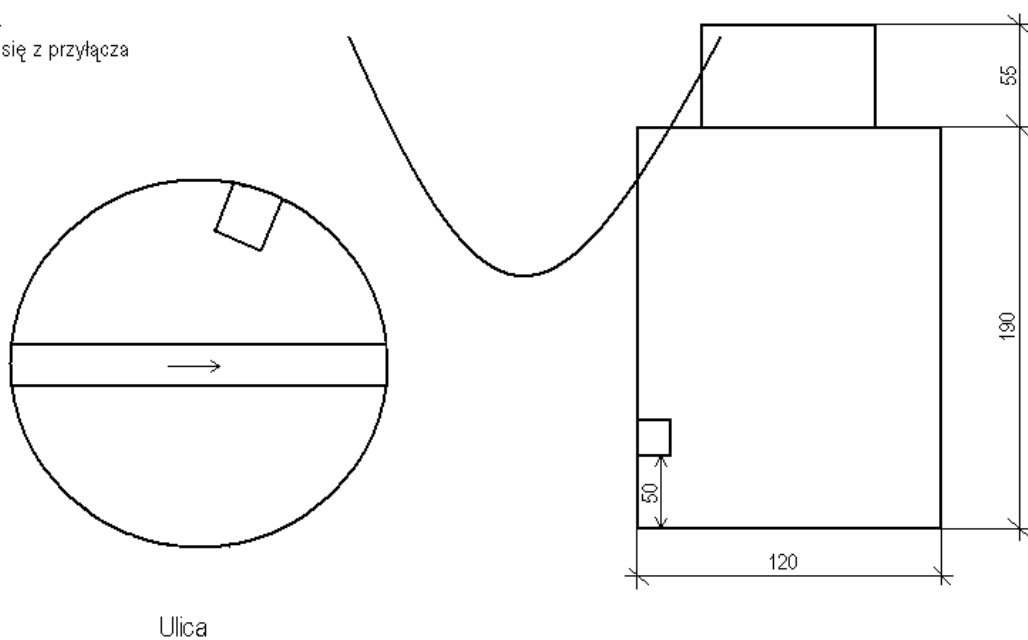
Ulica



**Studzienka nr 57**

Uwagi:

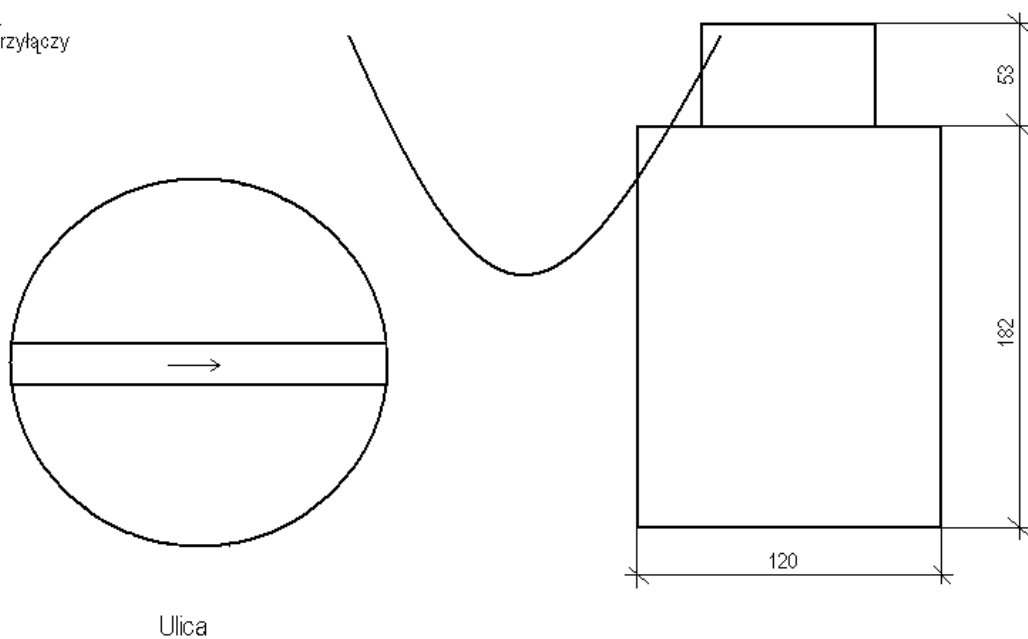
- sączy się z przyłączy



**Studzienka nr 58**

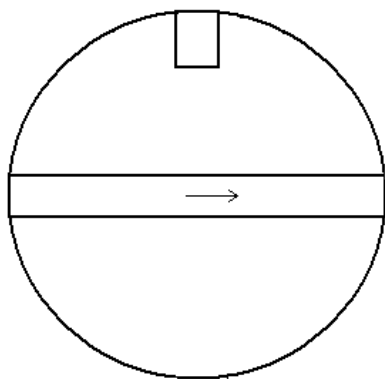
Uwagi:

- brak przyłączy

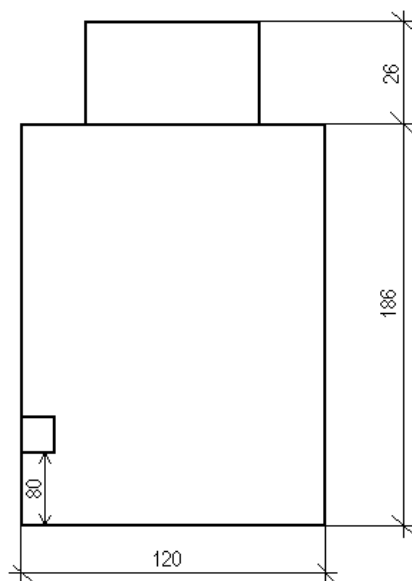


**Studzienka nr 59**Uwagi:

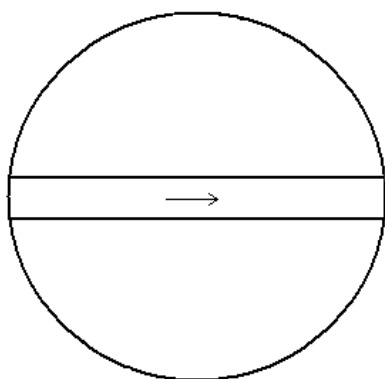
- kapie z przyłącza
- mocno płynię korytem



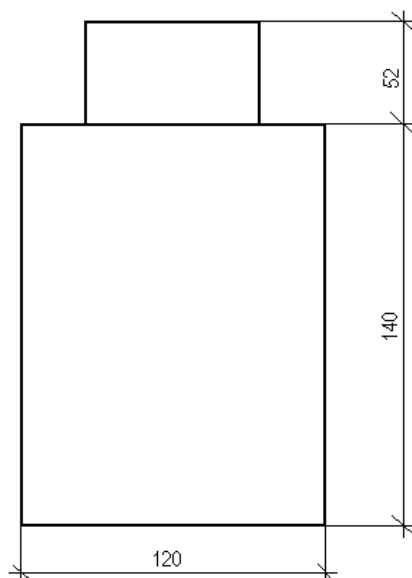
Ulica

**Studzienka nr 60**Uwagi:

- brak przyłącza
- studzienka cała mokra
- ruchomy pierścień



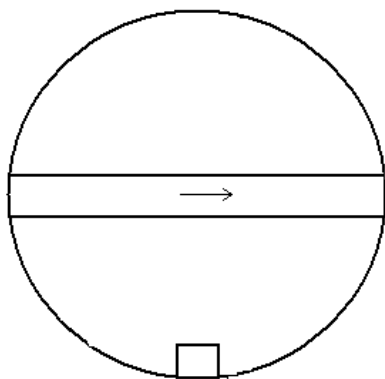
Ulica



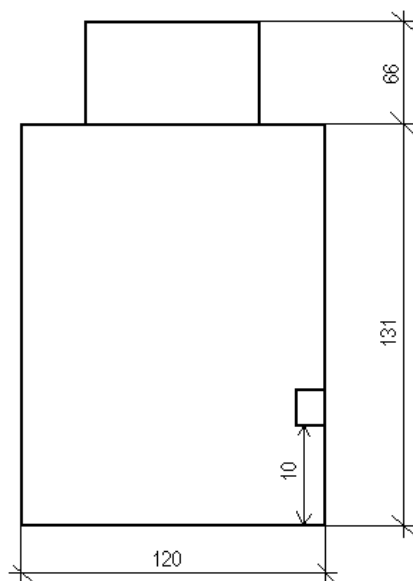
### Studzienka nr 61

Uwagi:

- ruchomy pierścień



Ulica

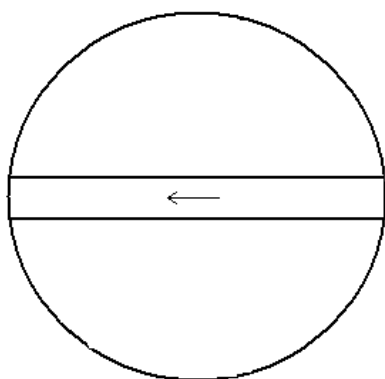


### Mochnate

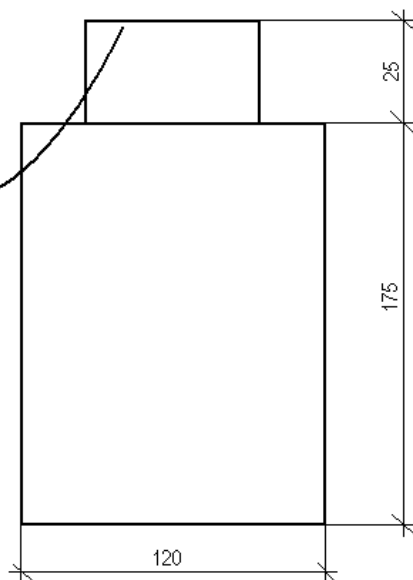
### Studzienka nr 62

Uwagi:

- mokre ściany



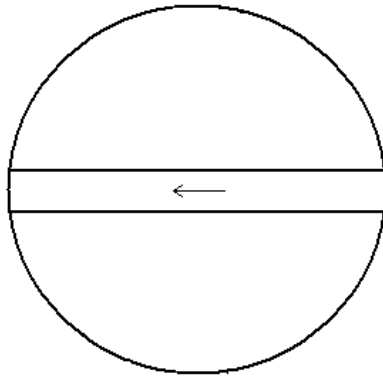
Ulica



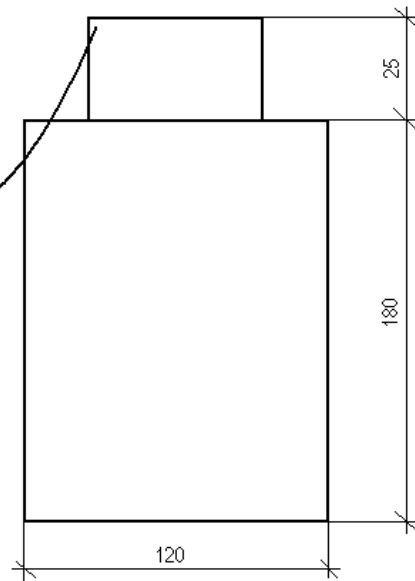
### Studzienka nr 63

Uwagi:

- brak przyłączy
- studzienka cała mokra



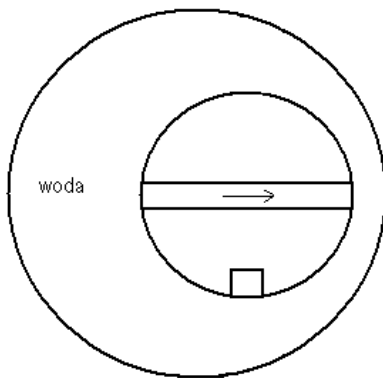
Ulica



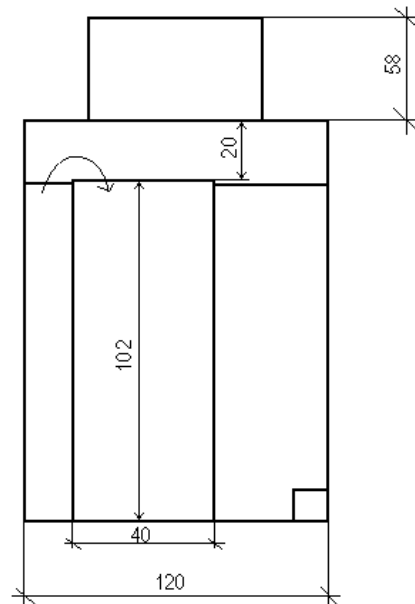
### Studzienka nr 64

Uwagi:

- studzienka z rurą PCV
- woda w studzience wlewa się do rury PCV
- mocno zabrudzona studzienka wokół rury PCV
- przyłączy przy dnie



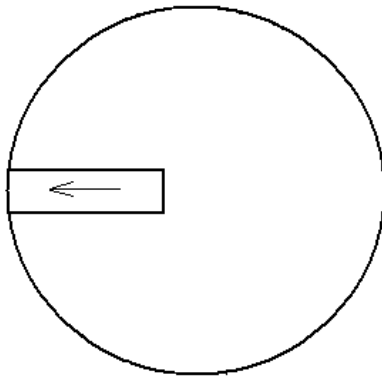
Ulica



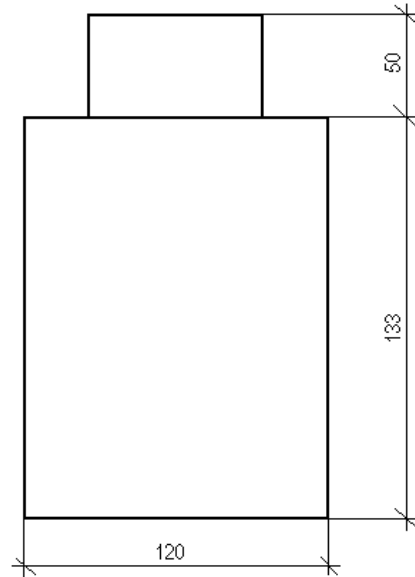
**Studzienka nr 65**

Uwagi:

- sucha
- początek



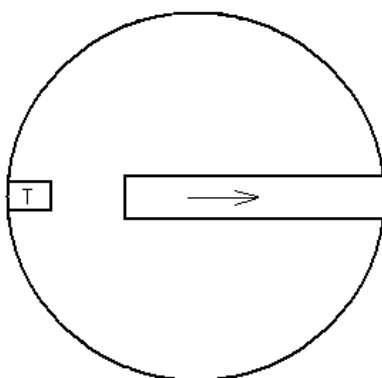
Ulica



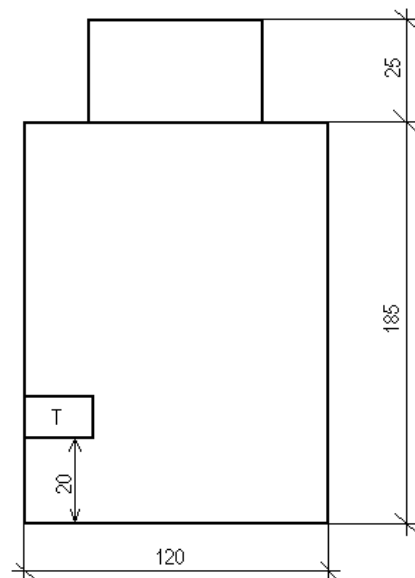
**Studzienka nr 66**

Uwagi:

- początek
- mocno płynie
- T- tłoczny  $\varnothing 90$



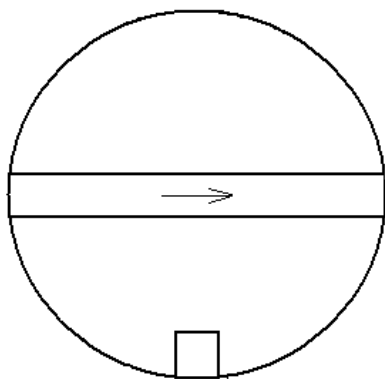
Ulica



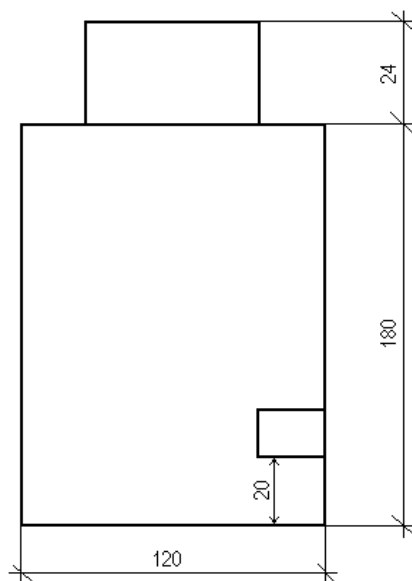
### Studzienka nr 67

#### Uwagi:

- ciągle płynie woda z przyłącza
- zruszony pierścień



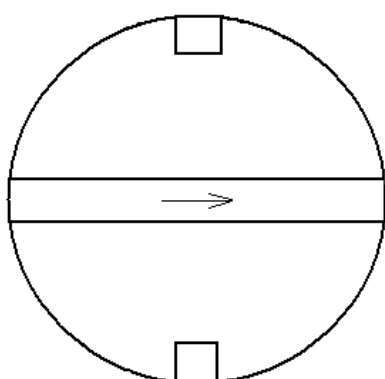
Ulica



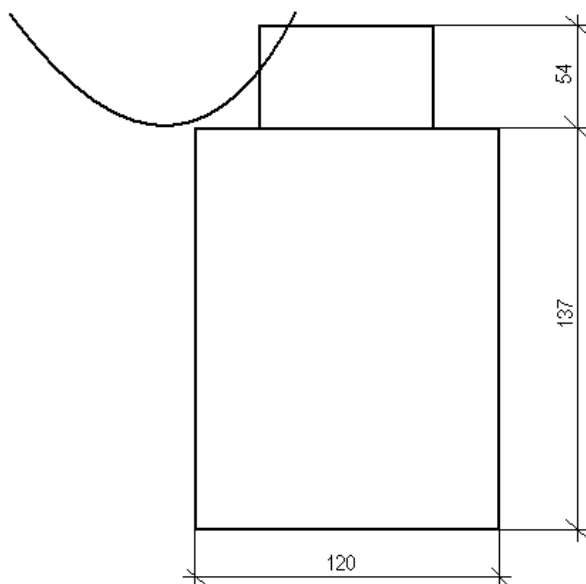
### Studzienka nr 68

#### Uwagi:

- cieknie z obu przyłączy



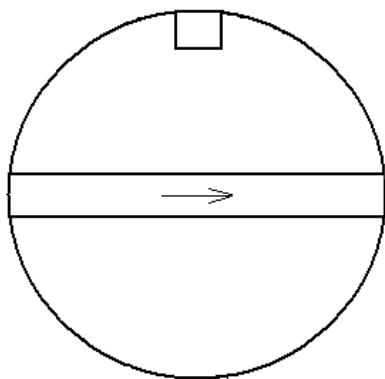
Ulica



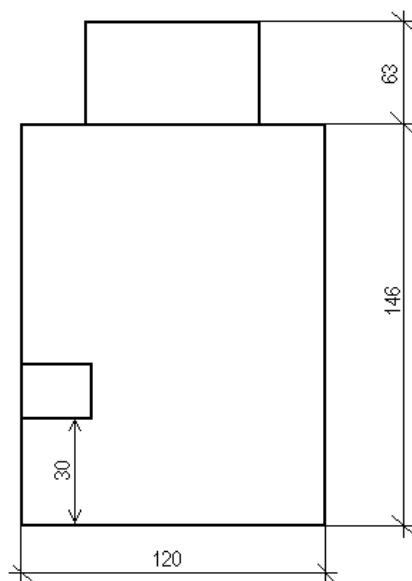
**Studzienka nr 69**

Uwagi:

- sucha



Ulica

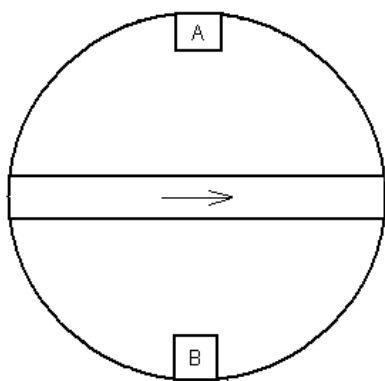


**Studzienka nr 70**

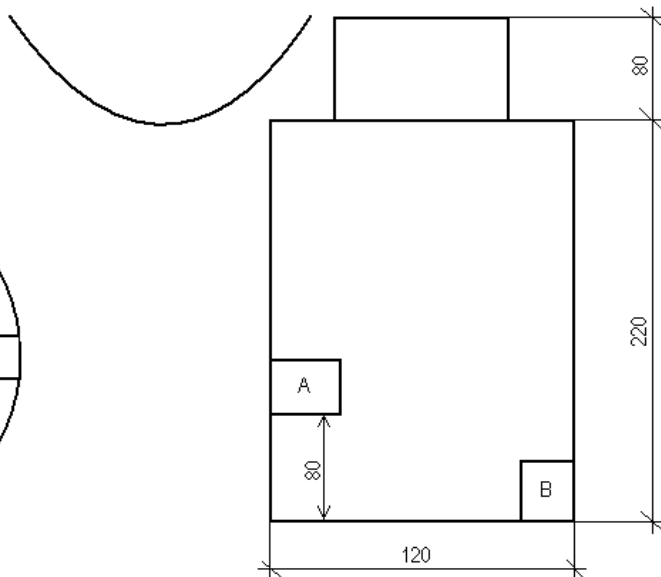
Uwagi:

- cieknie z obu przyłączy

- przyłączy B przy dnie



Ulica

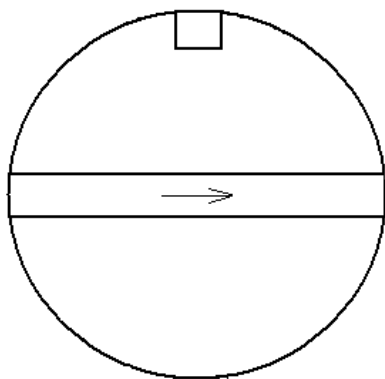




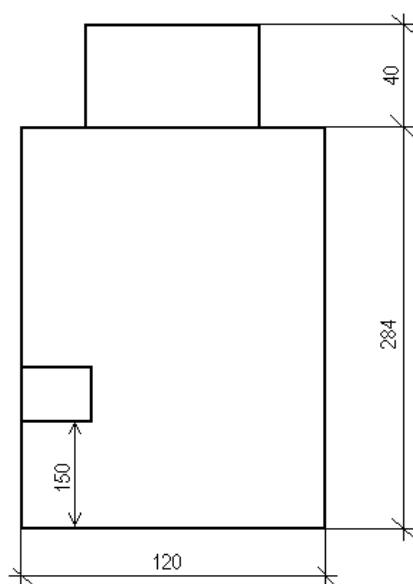
**Studzienka nr 71**

Uwagi:

- kapie z przyłącza



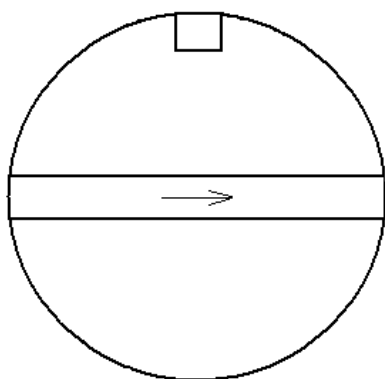
Ulica



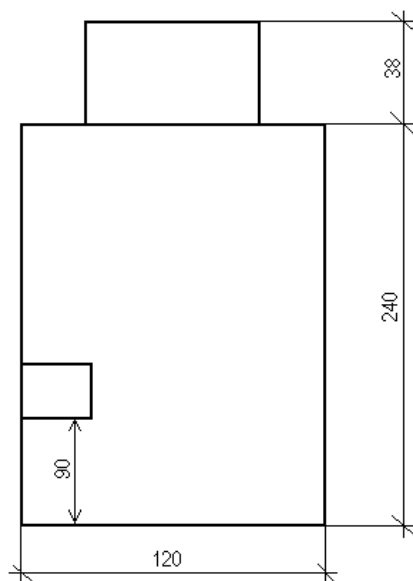
**Studzienka nr 72**

Uwagi:

- kapie z przyłącza



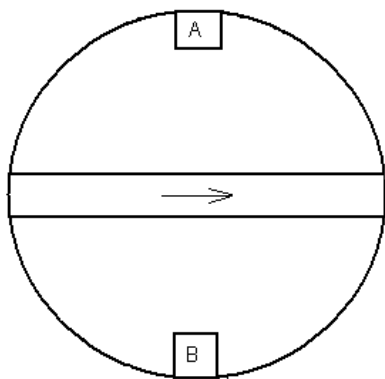
Ulica



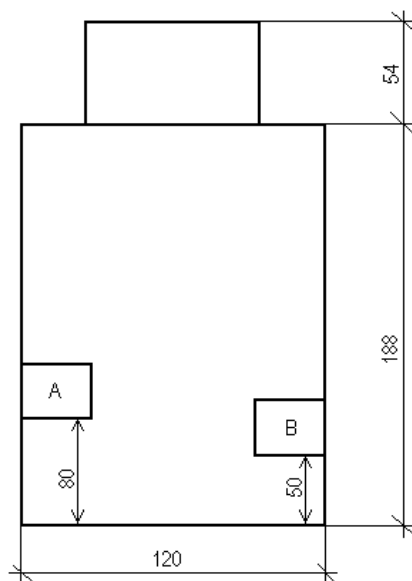
**Studzienka nr 73**

Uwagi:

- cieknie z przyłącza B



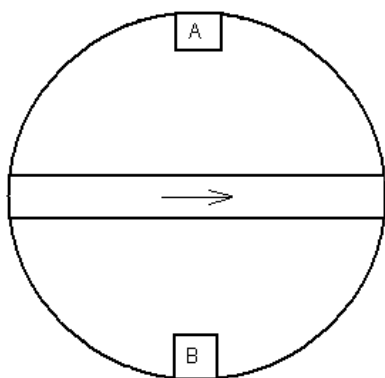
Ulica



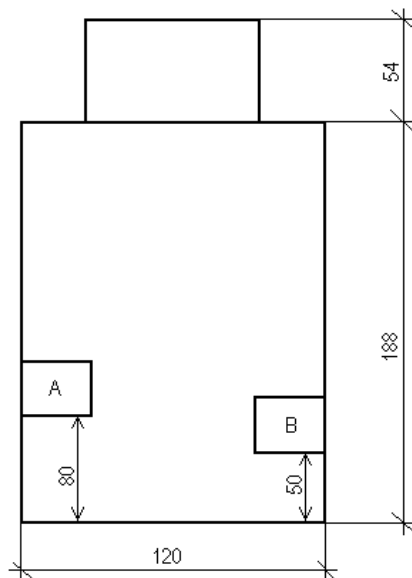
**Studzienka nr 73**

Uwagi:

- cieknie z przyłącza B



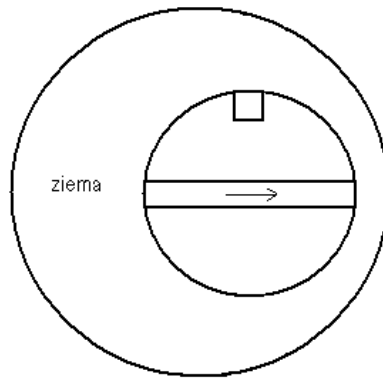
Ulica



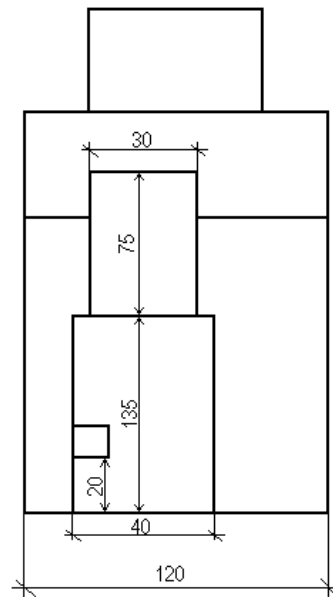
**Studzienka nr 82**

Uwagi:

- studzienka z rurą PCV
- cieknie z przyłącza



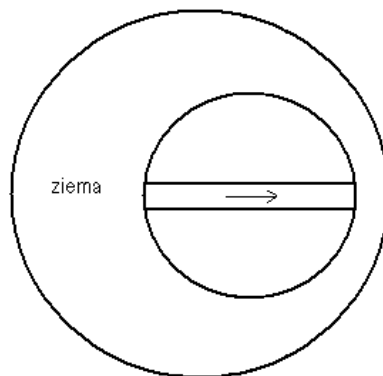
Ulica



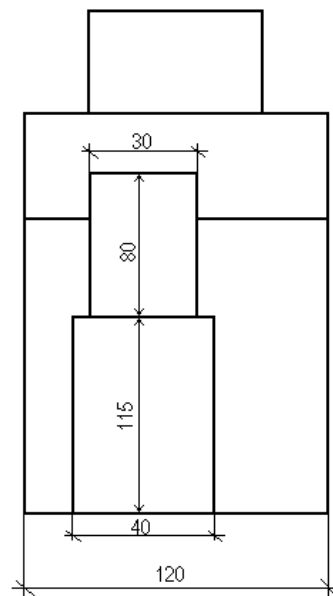
**Studzienka nr 83**

Uwagi:

- studzienka z rurą PCV
- brak przyłącza
- ślady zacieków na łączeniu rur PCV



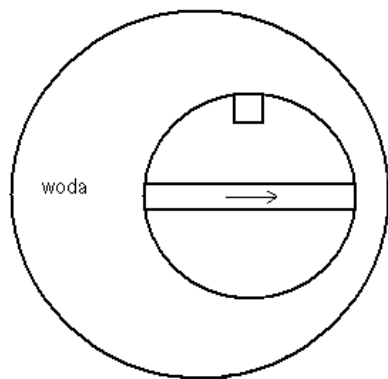
Ulica



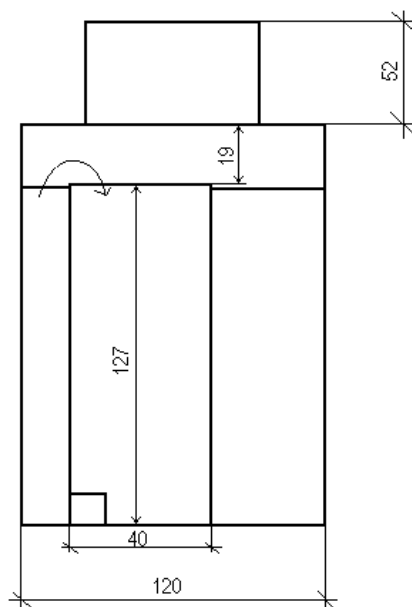
### Studzienka nr 84

#### Uwagi:

- studzienka z rurą PCV
- cieknie z przyłącza
- woda w studzience wlewa się do rury PCV
- przyłącze przy dnie



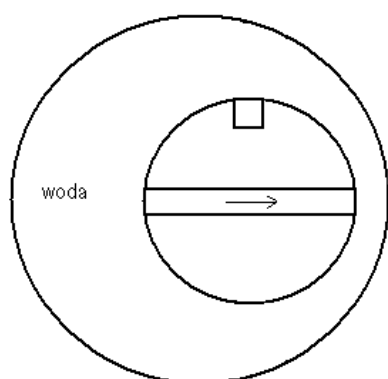
Ulica



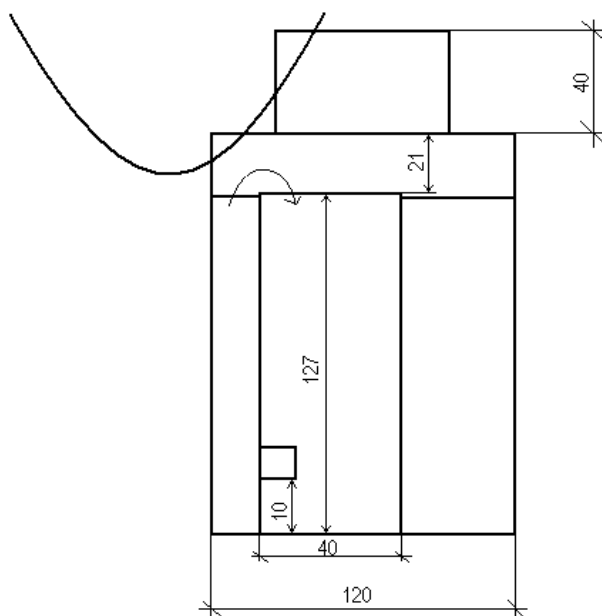
### Studzienka nr 85

#### Uwagi:

- studzienka z rurą PCV
- sączy się z przyłącza
- woda w studzience wlewa się do rury PCV

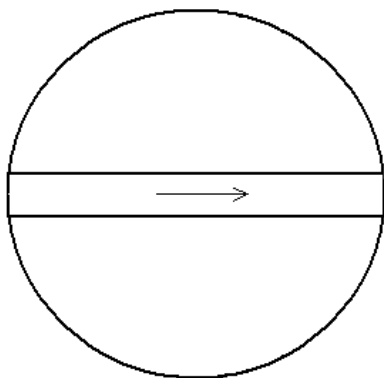


Ulica

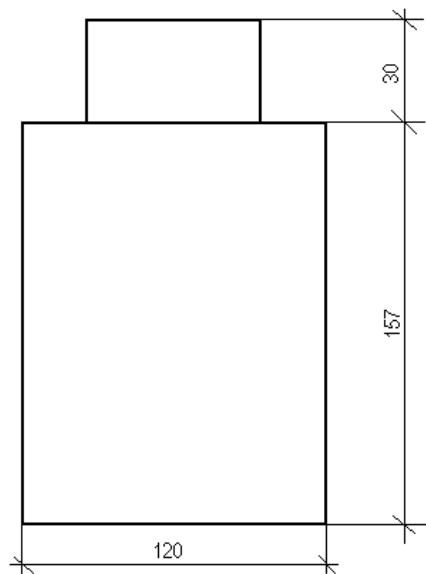


**Studzienka nr 85a**Uwagi:

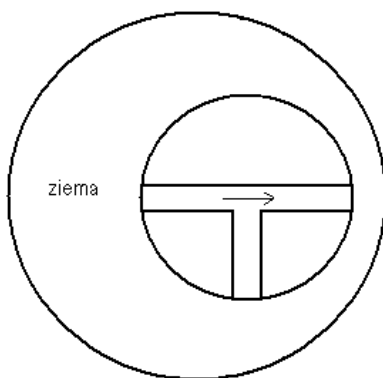
- brak przyłączy
- mokra studzienka



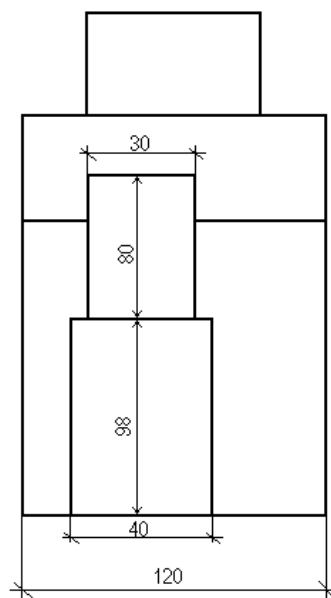
Ulica

**Studzienka nr 86**Uwagi:

- studzienka z rurą PCV
- kapie w miejscu łączenia rur PCV



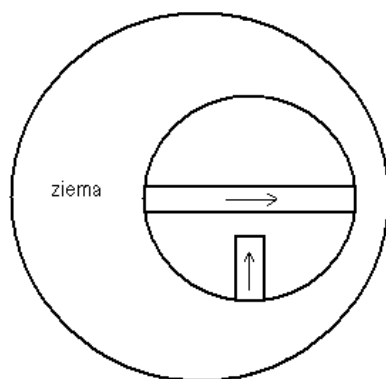
Ulica



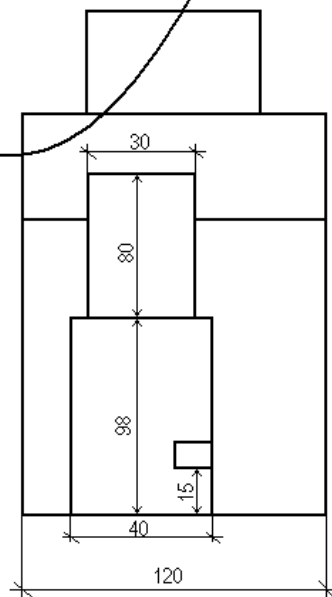
### Studzienka nr 87

#### Uwagi:

- studzienka z rurą PCV
- ciągle płynie z przyłącza



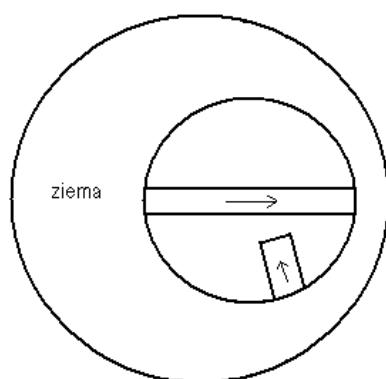
Ulica



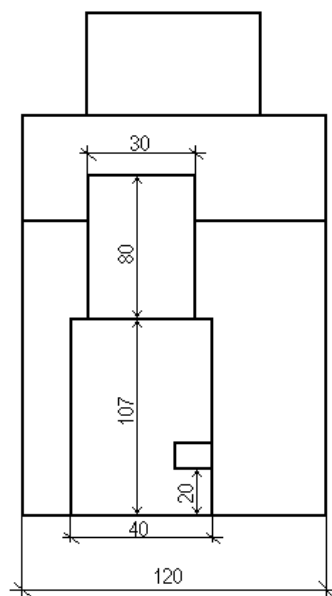
### Studzienka nr 88

#### Uwagi:

- studzienka z rurą PCV

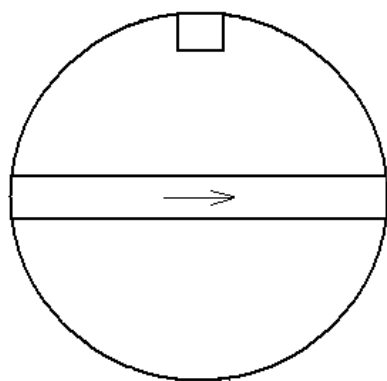


Ulica

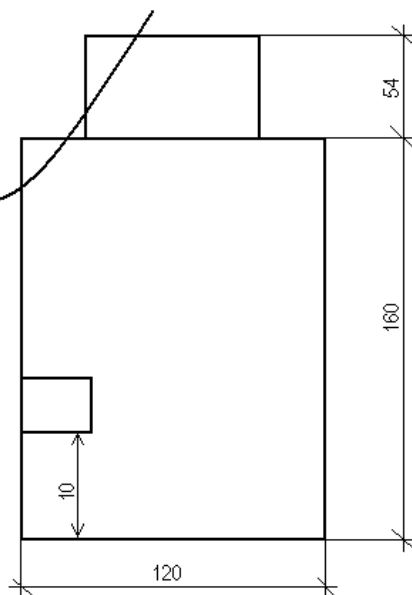


**Studzienka nr 89**

Uwagi:



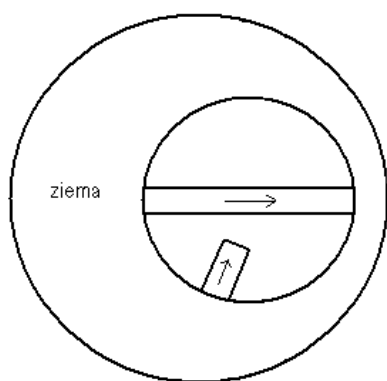
Ulica



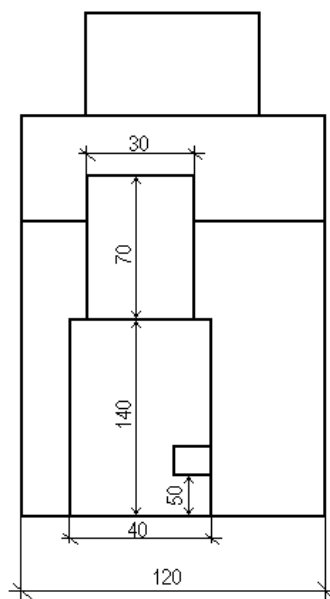
**Studzienka nr 90**

Uwagi:

- studzienka z rurą PCV



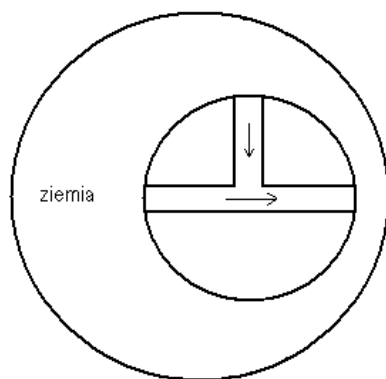
Ulica



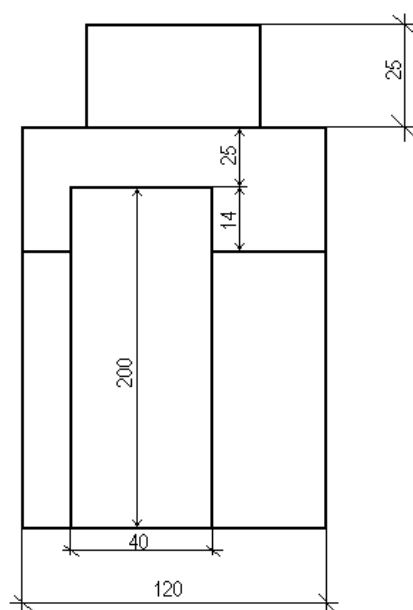
### Studzienka nr 91

Uwagi:

- studzienka z rurą PCV

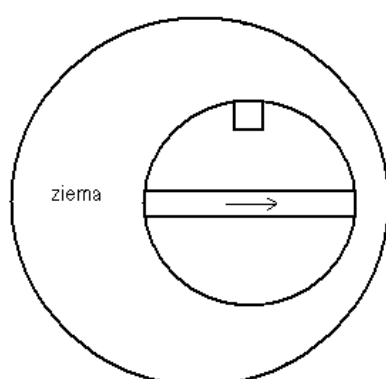


Ulica

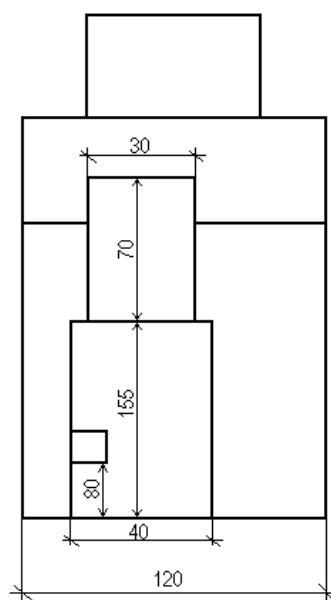


### Studzienka nr 92

Uwagi:



Ulica

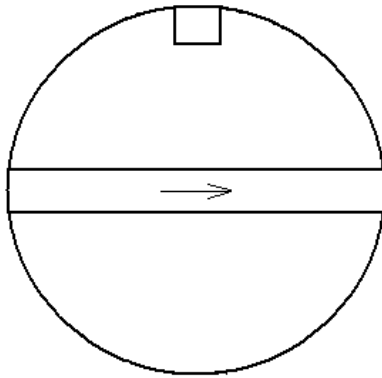




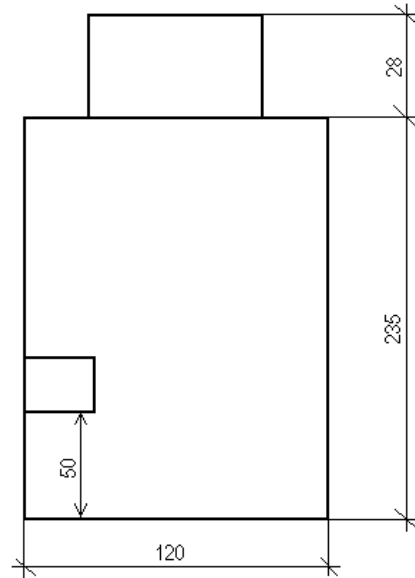
**Studzienka nr 93**

Uwagi:

- cieknie z przyłącza



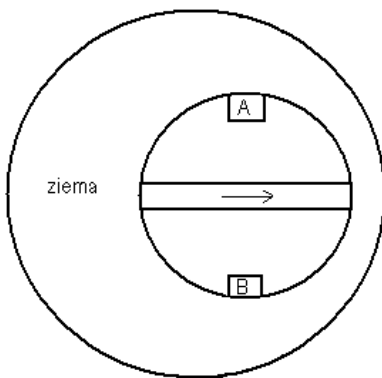
Ulica



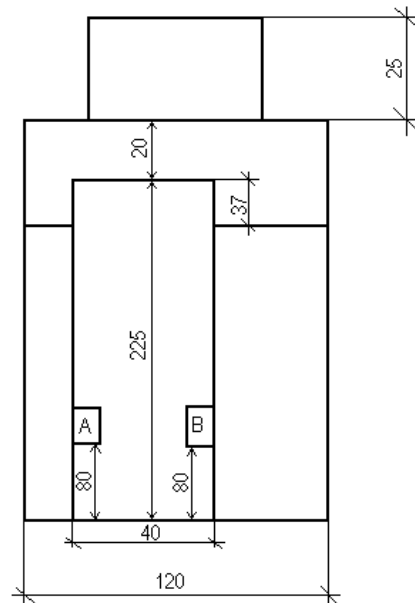
**Studzienka nr 94**

Uwagi:

- studzienka z rurą PCV  
- cieknie z obu przyłączy



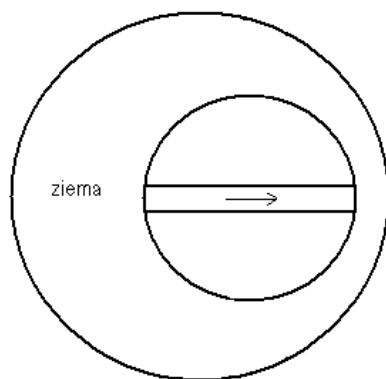
Ulica



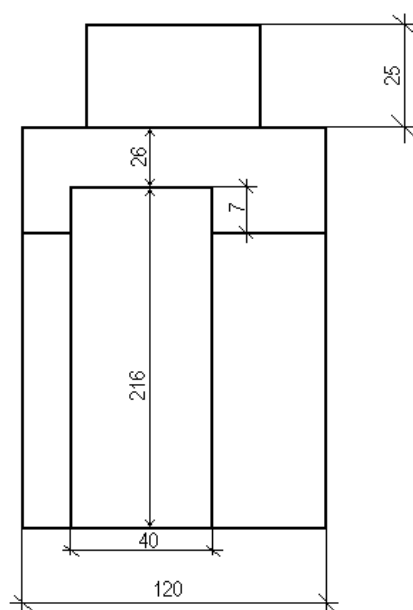
### Studzienka nr 95

Uwagi:

- studzienka z rurą PCV



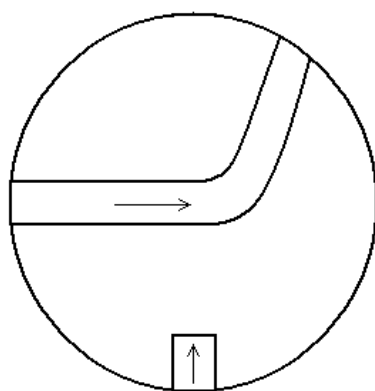
Ulica



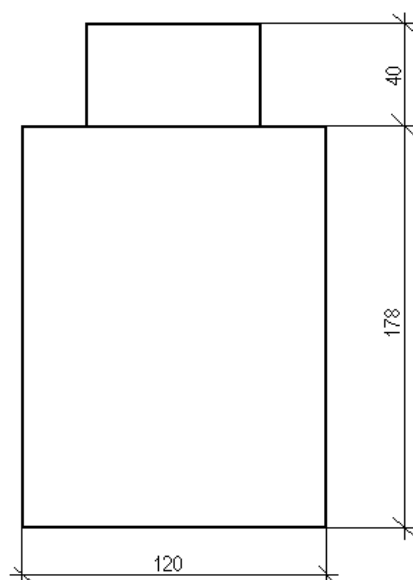
### Studzienka nr 96

Uwagi:

- cieknie z przyłącza

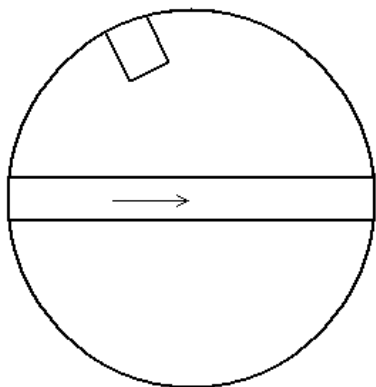


Ulica

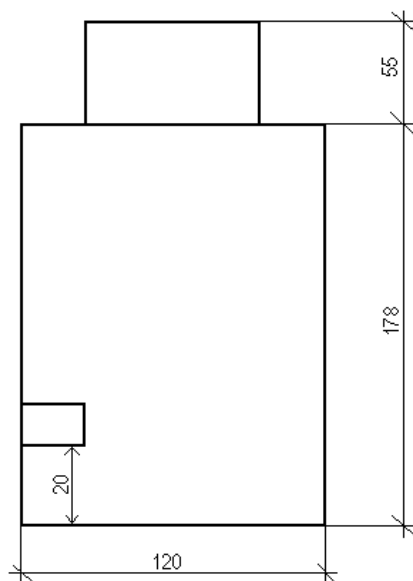


**Studzienka nr 97**

Uwagi:

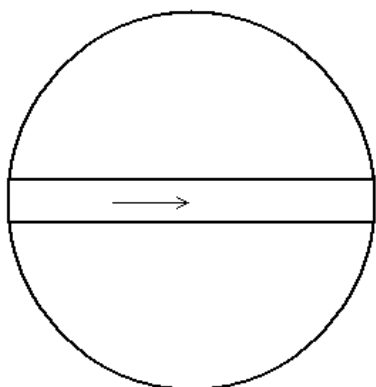


Ulica

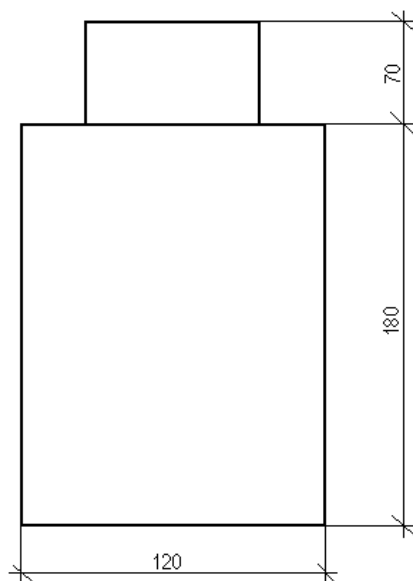


**Studzienka nr 98**

Uwagi:



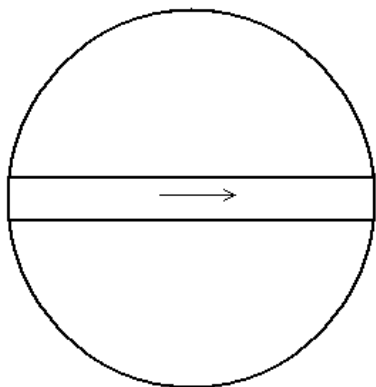
Ulica



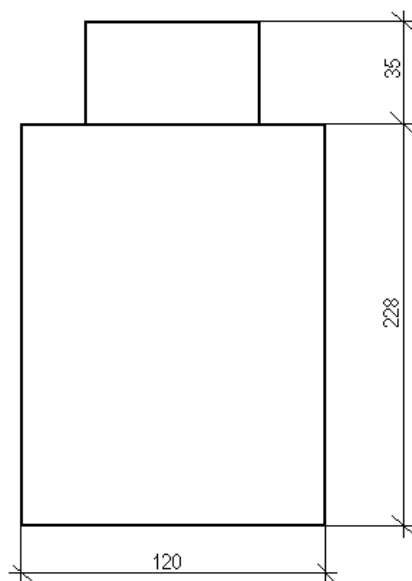
### Studzienka nr 99

Uwagi:

- ruchomy pierścień



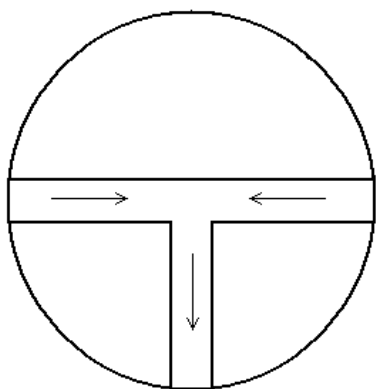
Ulica



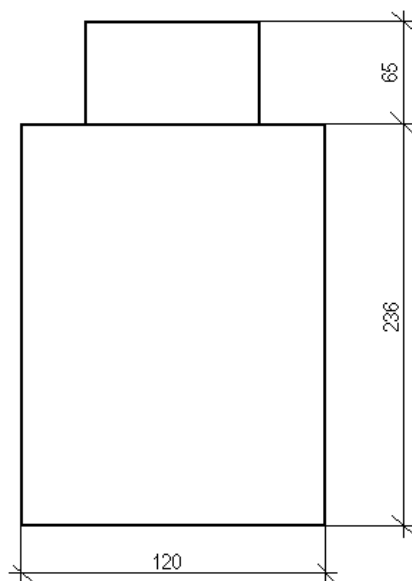
### Studzienka nr 100

Uwagi:

- spływ w kierunku przepompowni

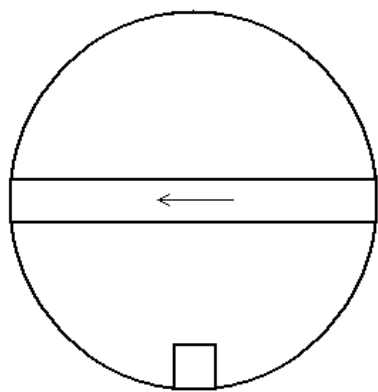


Ulica

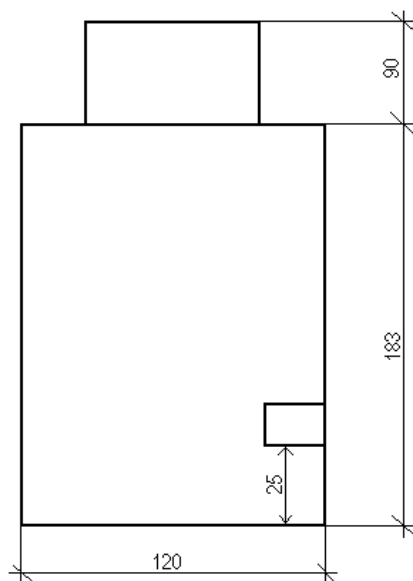


**Studzienka nr 101**

Uwagi:

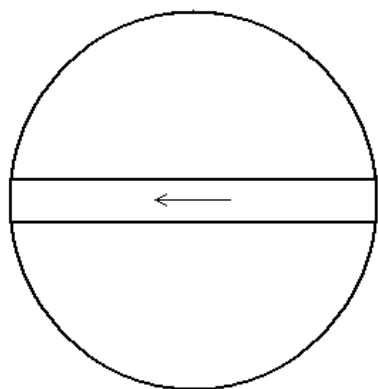


Ulica

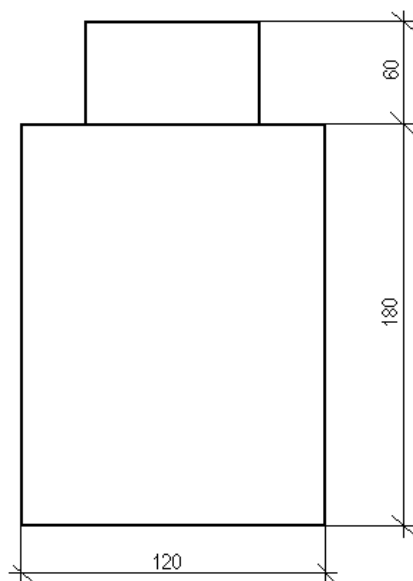


**Studzienka nr 102**

Uwagi:

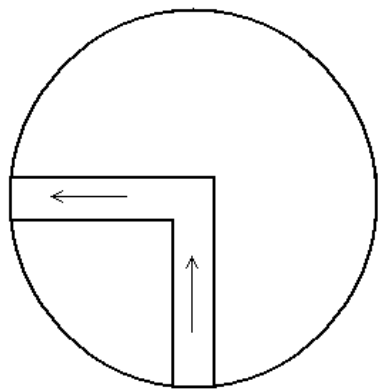


Ulica

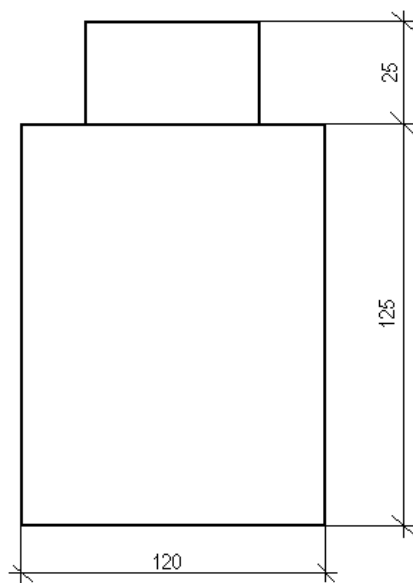


**Studzienka nr 104**

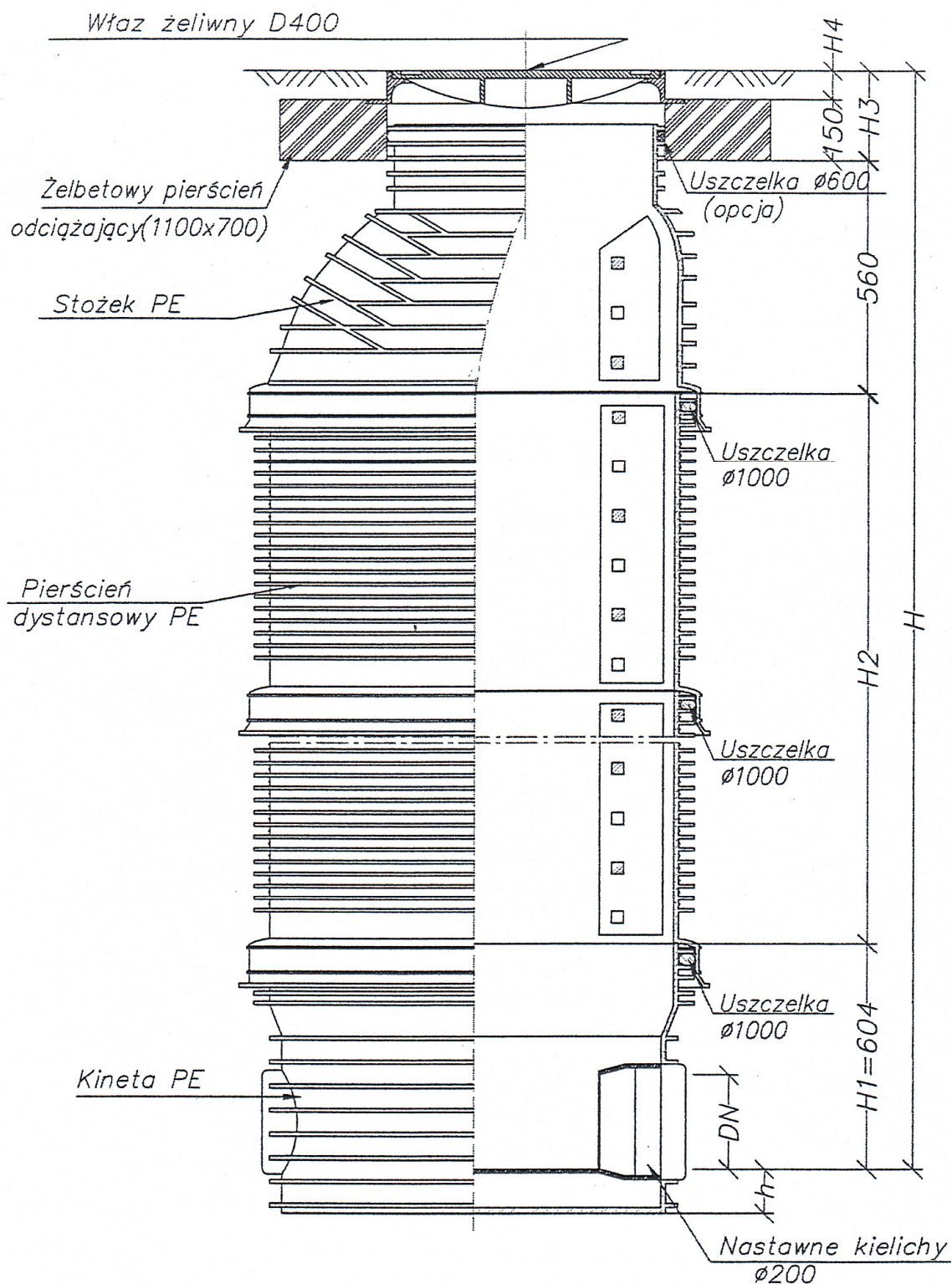
Uwagi:



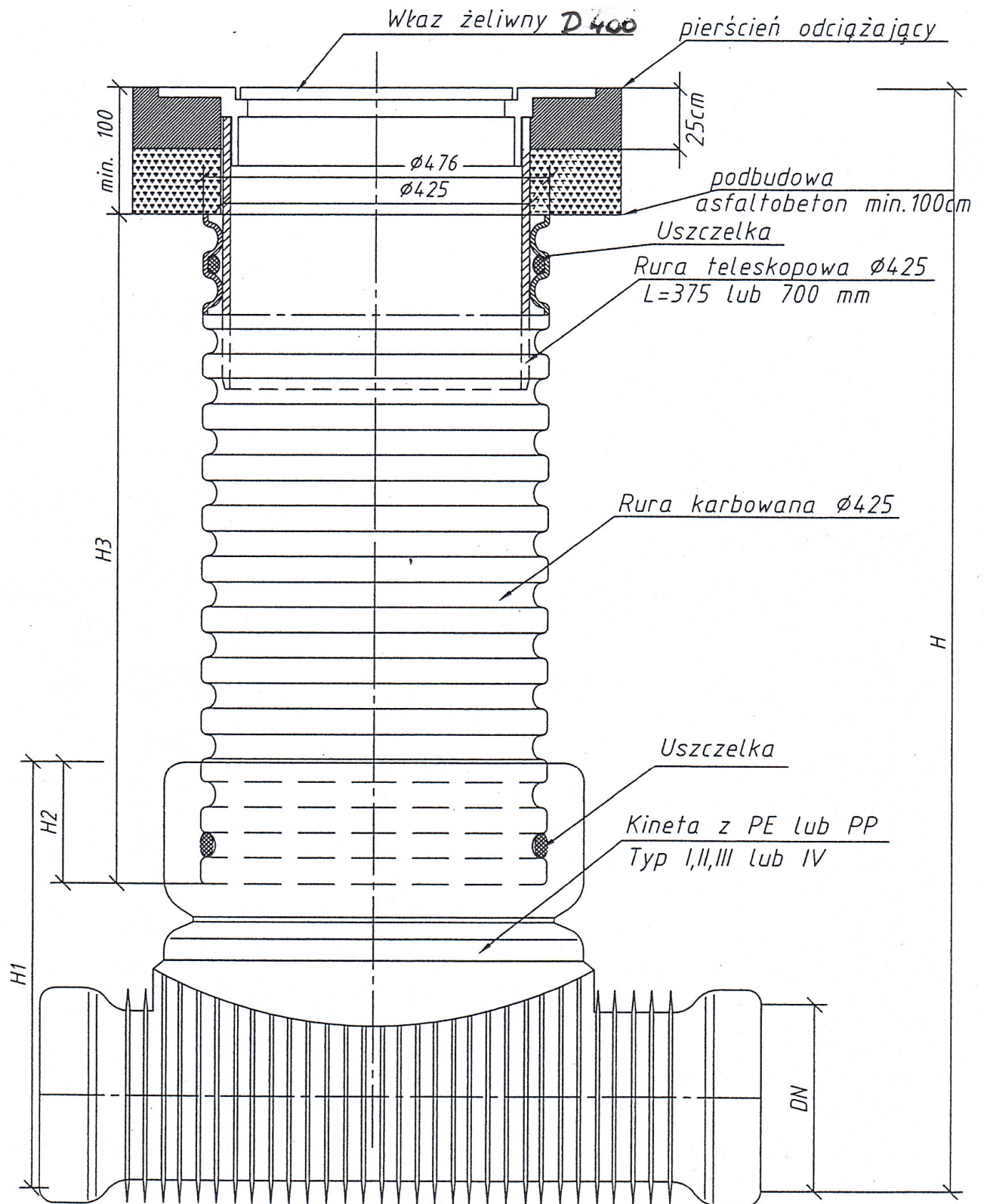
Ulica



# SCHEMAT STUDZIENKI WŁAZOWEJ $\varnothing 1000\text{mm}$



Studzienka inspekcyjna  $\phi 425$  z rurą teleskopową i włazem żeliwnym i pierścieniem odciążającym





Lokalizacja dróg powiatowych i gminnych w których, w obrębie pasa drogowego, planowana jest wymiana studni rewizyjnych na kanale sanitarnym

